



100% natural

**HAVE YOU EXPERIENCED  
THE WORLD'S MOST  
ICONIC NATURAL STONE?**

ANTOLINI EXCLUSIVE COLLECTION

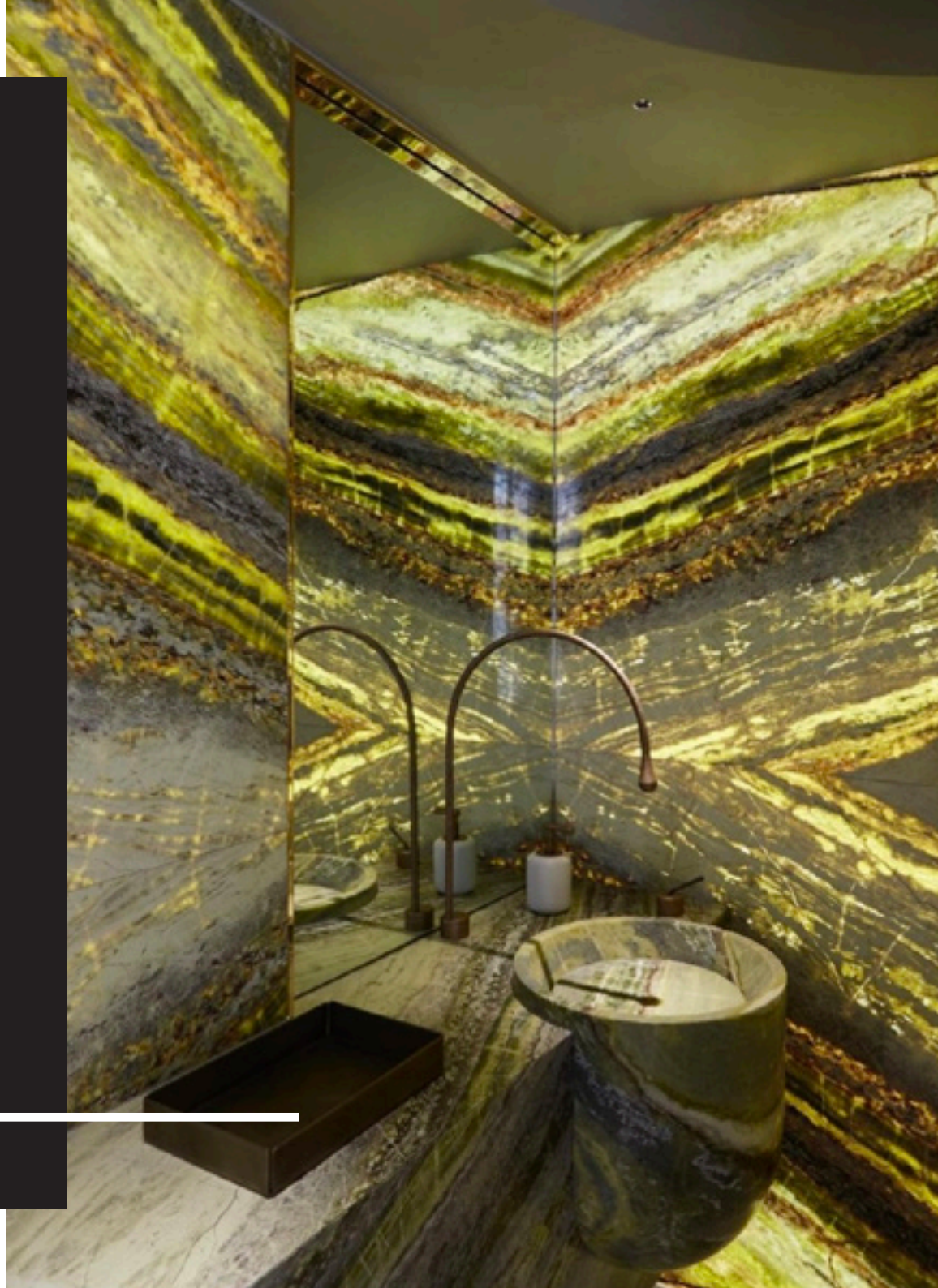
**PIETRA**  
Luxury in Stone

# PIETRA

Luxury in Stone

SOURCING LUXURIOUS STONE  
WITH MORE POTENTIAL THAN  
YOU EVER IMAGINED.

We have access to some of the world's most beautiful natural stone via an exclusive relationship with Antolini, an Italian manufacturer and widely respected global brand.





## ABOUT OUR OWNER

### **Tina Vercelote**

Tina is the owner and personal curator of the gallery of stone seen at PIETRA Luxury in Stone. Her pursuit of the best selection and highest quality natural stone is possible through special access to Antolini of Italy, the world's largest manufacturer of natural stone. PIETRA is one of seven exclusive resellers of Antolini products in the United States.

Tina offers a completely different experience at PIETRA, starting with professional and personal service through relationship building. A trusted source who can both identify and specify material as well as provide hands on expertise on your project details from conception to completion.

Her vision is to bring innovative and iconic natural stone design ideas to architects, designers, builders, and homeowners so they can enjoy the beauty, purity, and versatility of mother nature's finest designs!



## **PRESERVING THE BEAUTY OF NATURAL STONE**

Azerocare is a groundbreaking and unprecedented game changer within the natural stone industry. Azerocare is not a sealer. Instead, it is an integral part of Antolini's state-of-the-art production process in Italy. Without sacrificing or affecting colors and characteristics of natural stone, Antolini's Azerocare is the only protective treatment available, providing polished marbles, onyxes and soft quartzites full protection from etching and staining caused by contact with elements such as: lemon, red wine, coffee, ketchup, toothpaste and shampoo. Azerocare grants also a water-repellent and oil-repellent protection. Azerocare is tested to be safe for up to 12 hours. Surfaces treated with Azerocare remain easy to clean - simply use water, neutral soap, and a non-abrasive cloth to wipe down surfaces without sacrificing Azerocare's protection.





K  
E  
N  
N  
E  
T  
S  
I  
N  
Z  
I  
N  
G



EXPLOSION BLUE



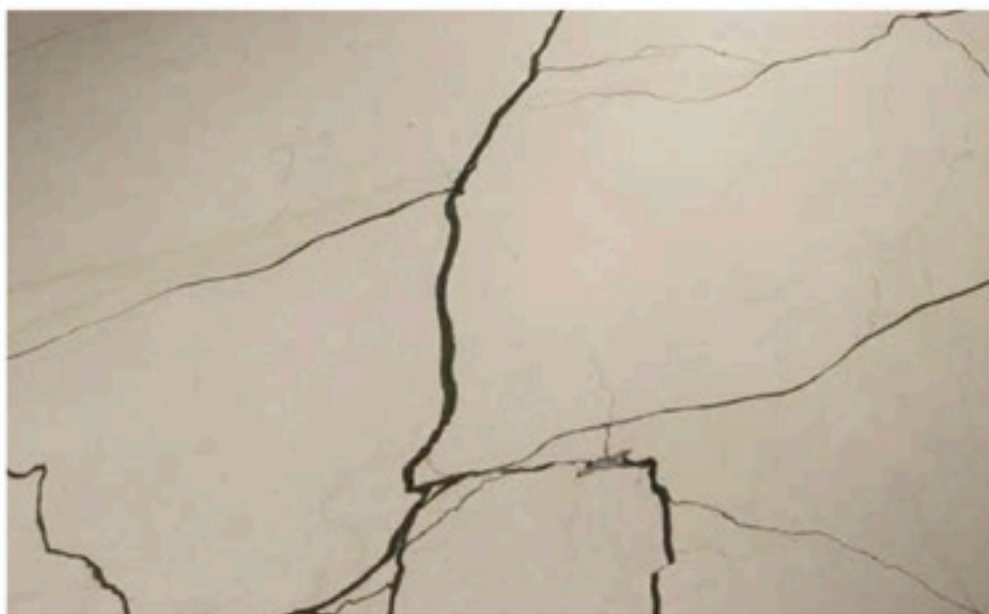
EXPLOSION BLUE ( QUARTZITE )

LUX



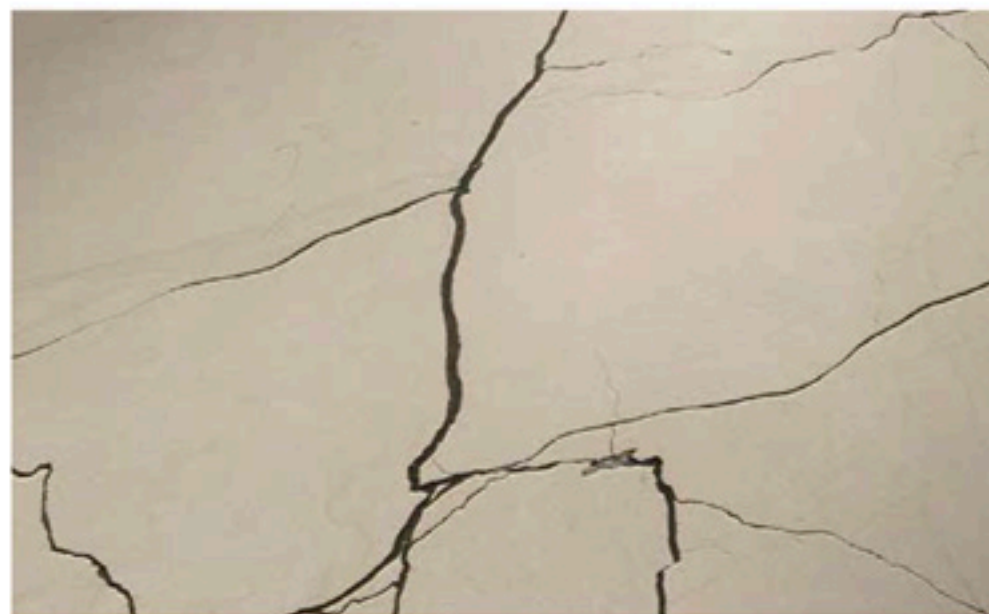
EXPLOSION BLUE ( QUARTZITE )

LEATHER



LINCOLN STONE "DV" ( MARBLE )

LUX



LINCOLN STONE "DV" ( MARBLE )

LEATHER



JURASSIC BROWN 'EXTRA' ( MARBLE )

LUX



JURASSIC BROWN 'EXTRA' ( MARBLE )

LEATHER



CORTECCIA ( SOFT QUARTZITE )

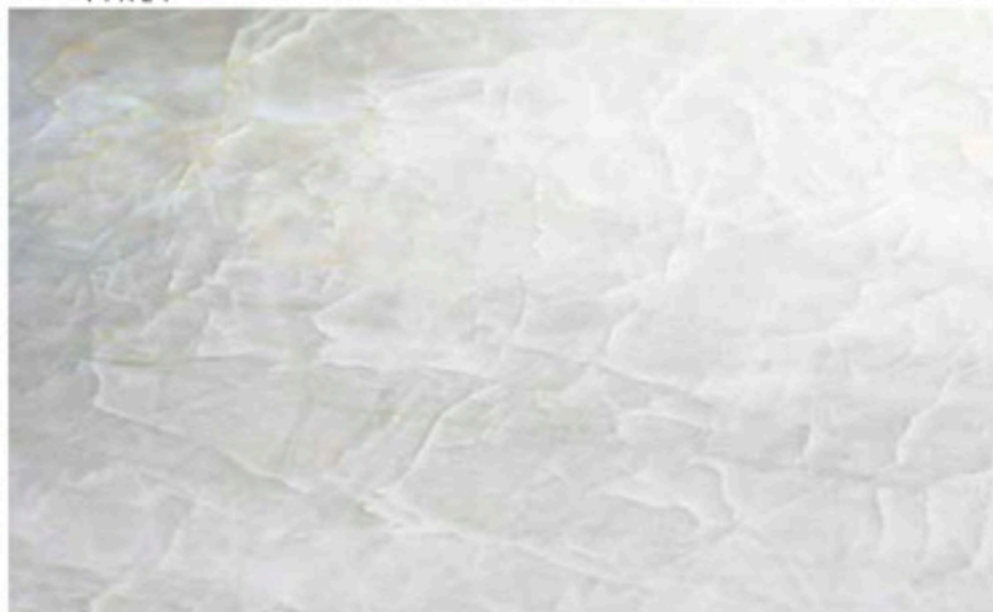
LUX



CORTECCIA ( SOFT QUARTZITE )

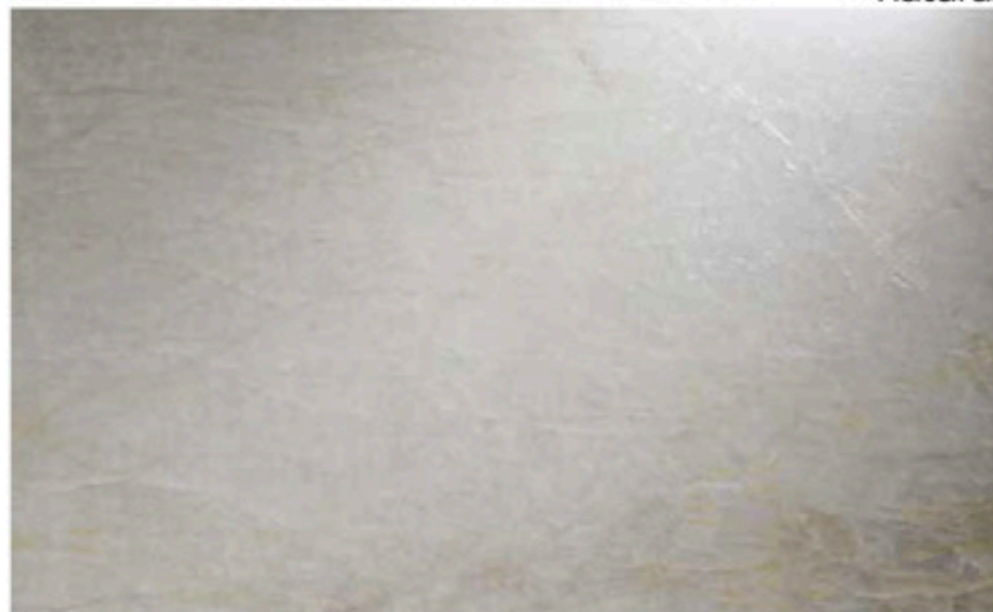
LEATHER





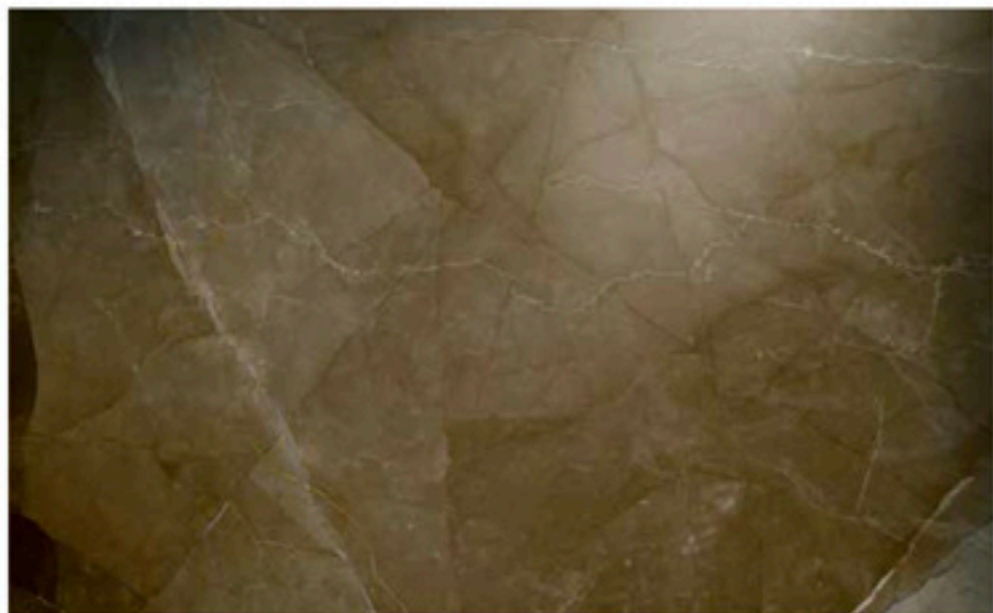
NAICA QUARTZ ( QUARTZITE )

LUX



NAICA QUARTZ ( QUARTZITE )

LEATHER



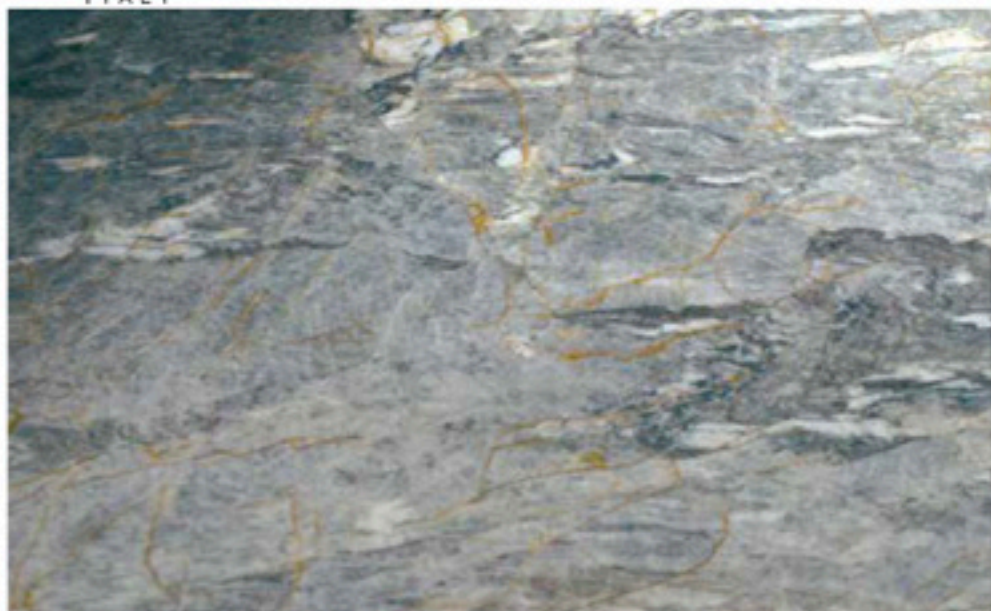
BRONZE AMANI ( MARBLE )

LUX



BRONZE AMANI ( MARBLE )

LEATHER



QUARZITE CIELO ( QUARTZITE )

LUX



QUARZITE CIELO ( QUARTZITE )

LEATHER



FUSION WOW | ORIGINAL "LIGHT" ( QUARTZITE )

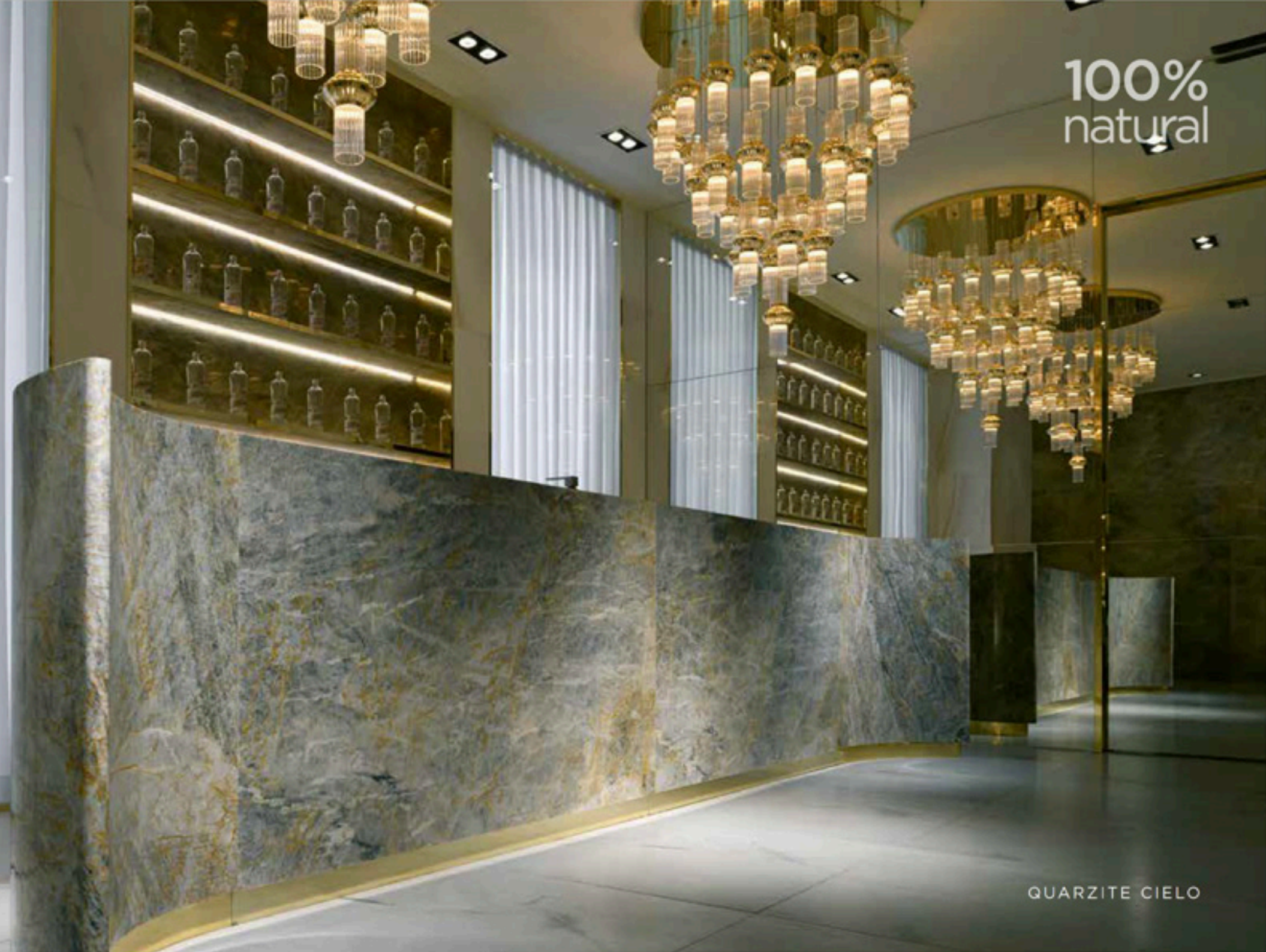
LUX



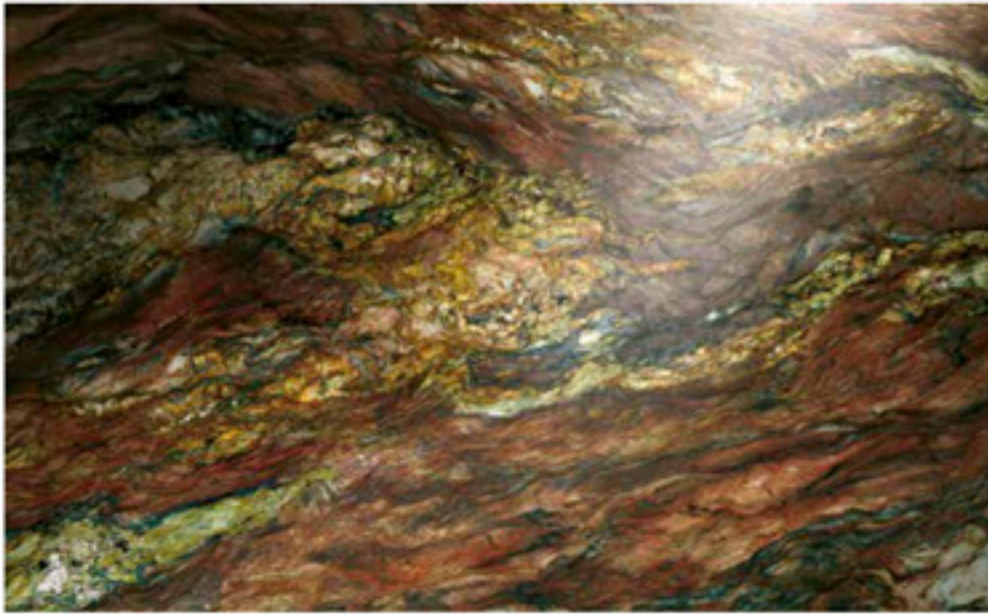
FUSION WOW | ORIGINAL "LIGHT" ( QUARTZITE )

LEATHER

100%  
natural

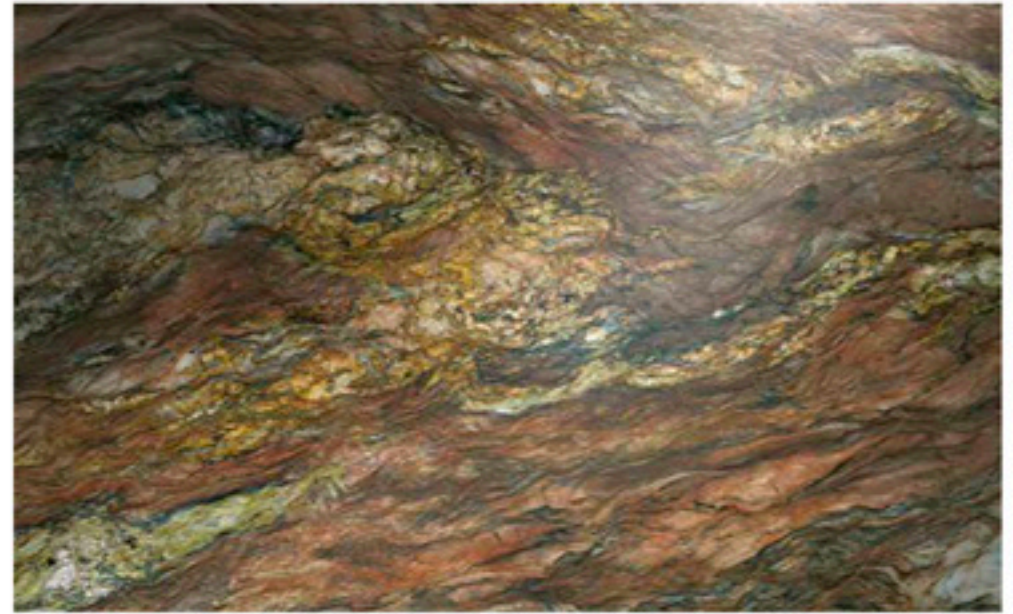


QUARZITE CIELO



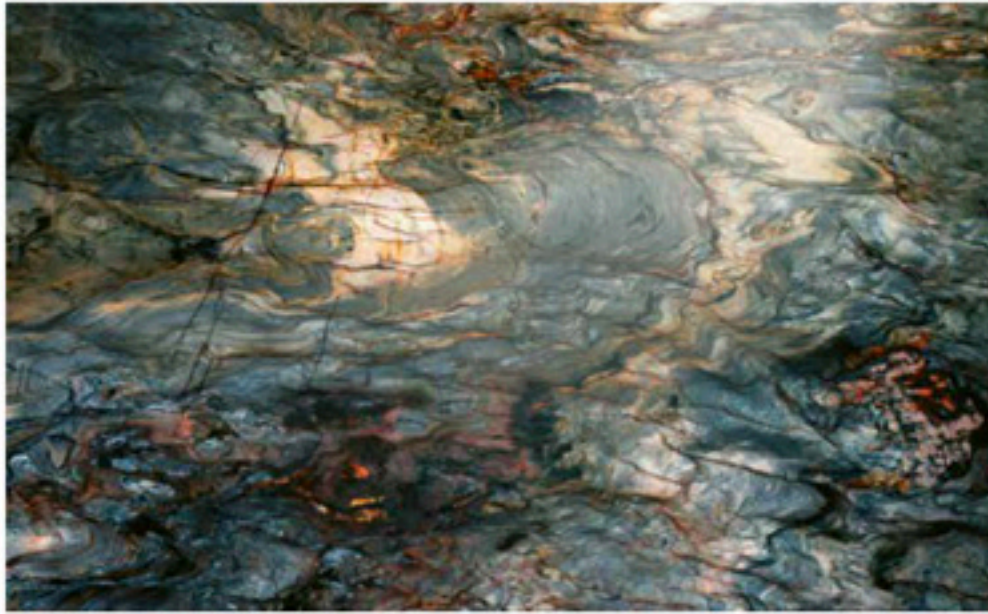
FUSION WOW | ORIGINAL "MULTICOLOR" ( QUARTZITE )

LLX



FUSION WOW | ORIGINAL "MULTICOLOR" ( QUARTZITE )

LEATHER



FUSION WOW | ORIGINAL "DARK" ( QUARTZITE )

LLX



FUSION WOW | ORIGINAL "DARK" ( QUARTZITE )

LEATHER



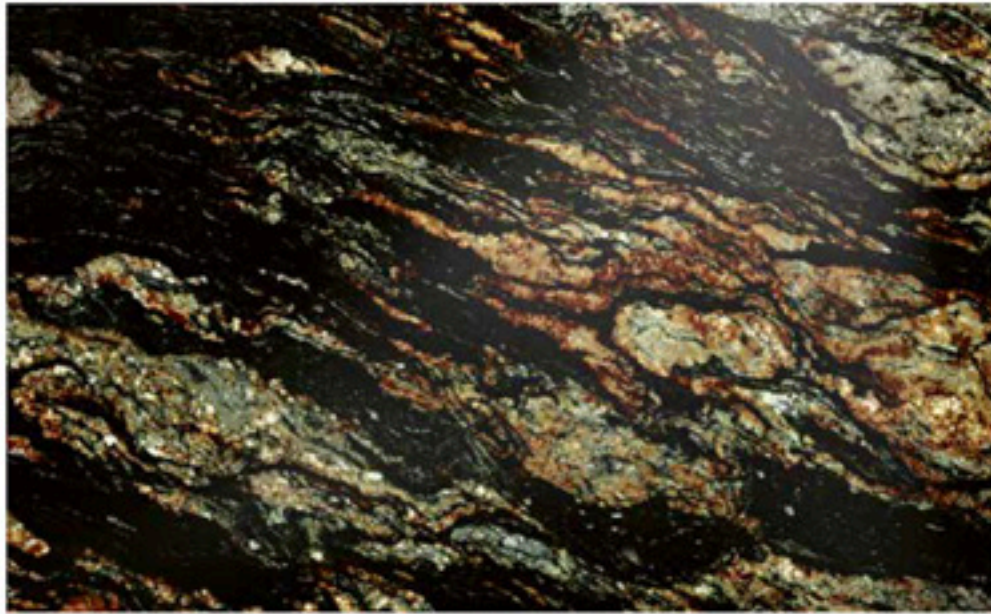
GOLDEN BEACH "ORIGINAL" ( GRANITE )

LUX



GOLDEN BEACH "ORIGINAL" ( GRANITE )

LEATHER



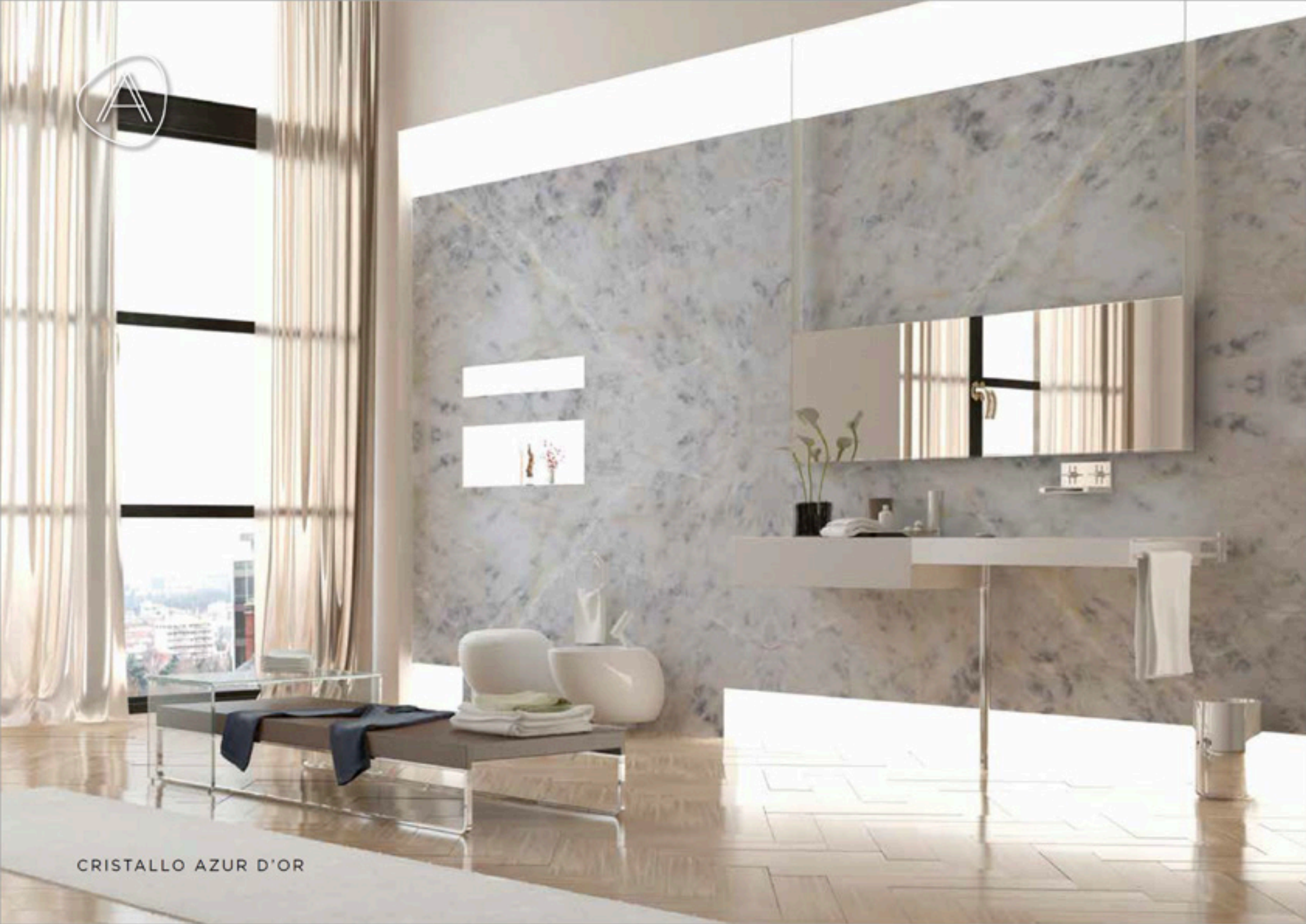
MAGMA BLACK ( GRANITE )

LUX



MAGMA BLACK ( GRANITE )

LEATHER



CRISTALLO AZUR D'OR



CRISTALLO ROSA "WOW" ( NATURAL QUARTZ )

LUX



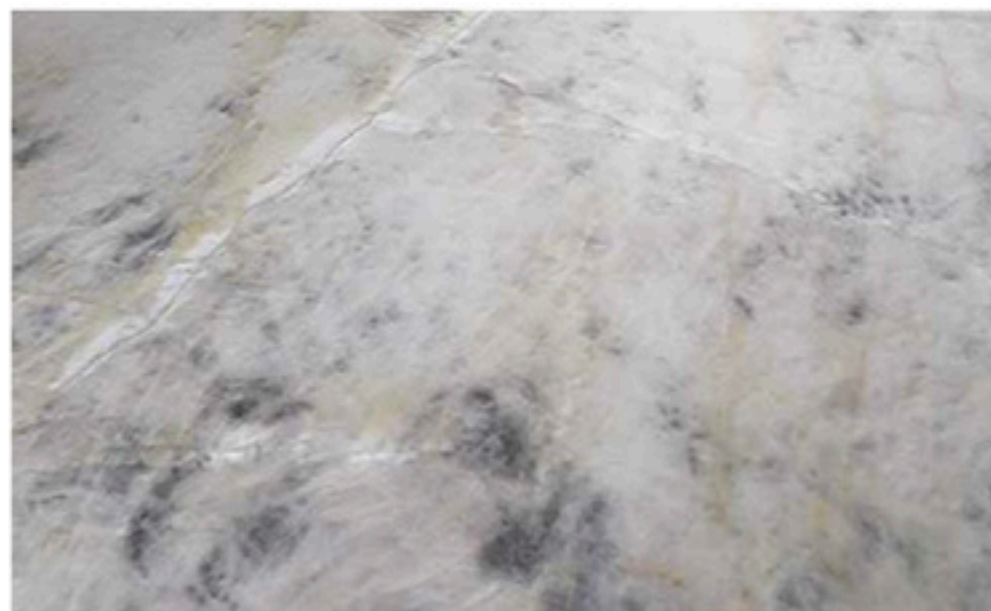
CRISTALLO ROSA "WOW" ( NATURAL QUARTZ )

LEATHER



CRISTALLO AZUR D'OR ( NATURAL QUARTZ )

LUX



CRISTALLO AZUR D'OR ( NATURAL QUARTZ )

LEATHER



CALCITE CARAIBICA "EXTRA" ( MARBLE )

LUX



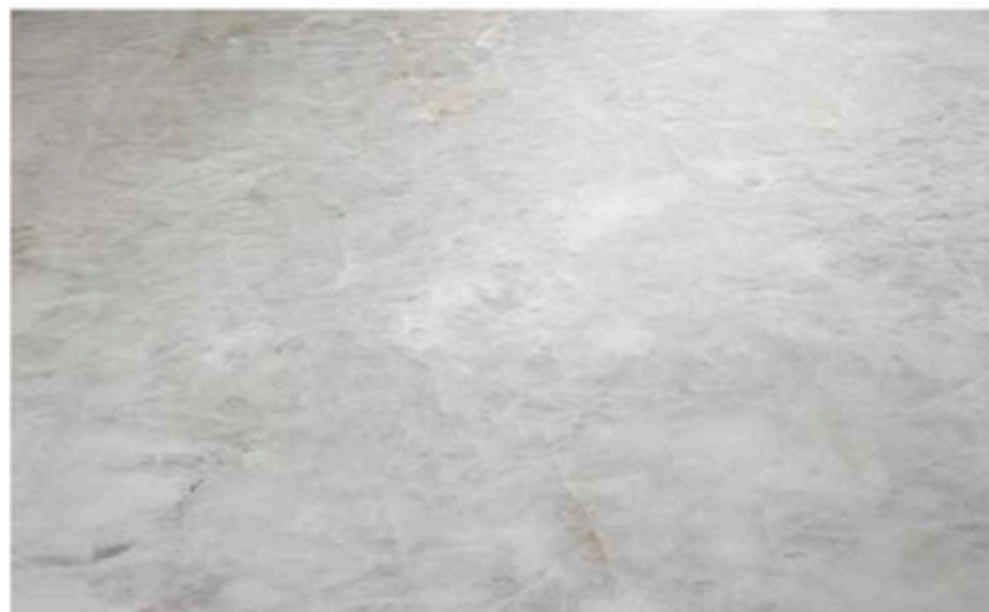
CALCITE CARAIBICA "EXTRA" ( MARBLE )

LEATHER



CRISTALLO ICEBERG ( NATURAL QUARTZ )

LUX



CRISTALLO ICEBERG ( NATURAL QUARTZ )

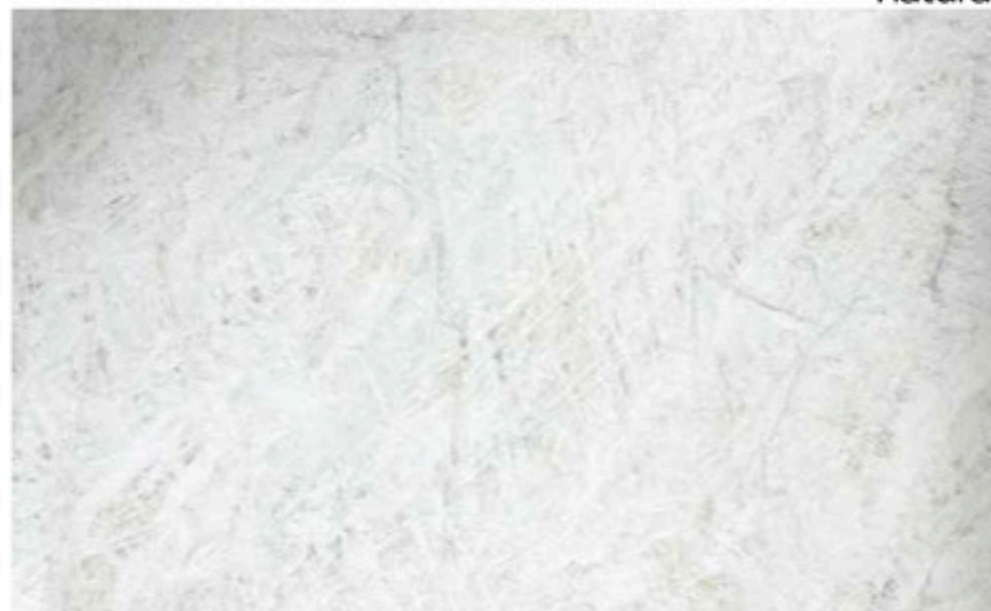
LEATHER





CRISTALLO BIANCO ( NATURAL QUARTZ )

LUX



CRISTALLO BIANCO ( NATURAL QUARTZ )

LEATHER



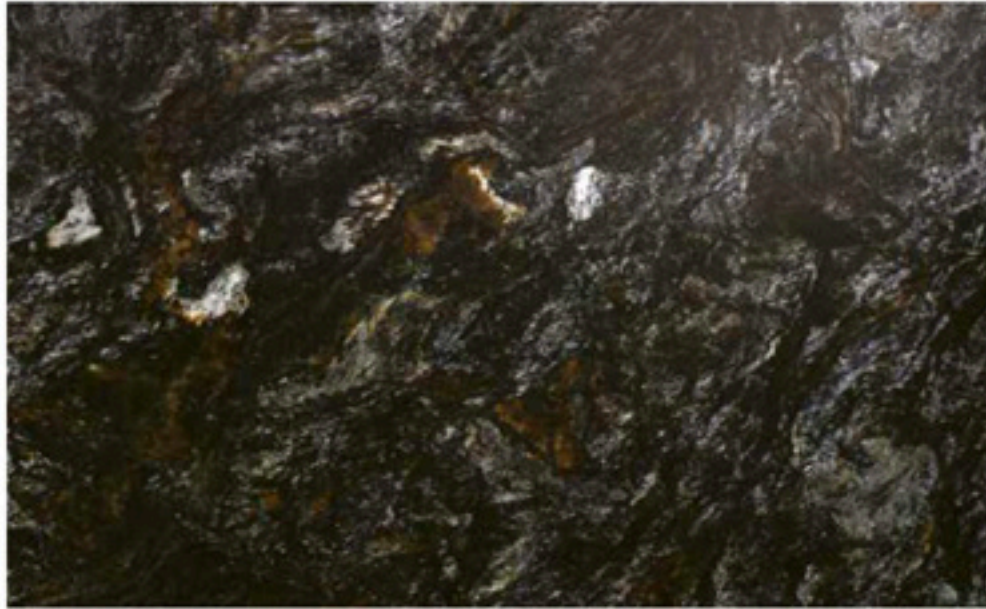
CRISTALLO COSMOPOLITAN ( NATURAL QUARTZ )

LUX



CRISTALLO COSMOPOLITAN ( NATURAL QUARTZ )

LEATHER



KOSMUS "A" (GRANITE)

LUX



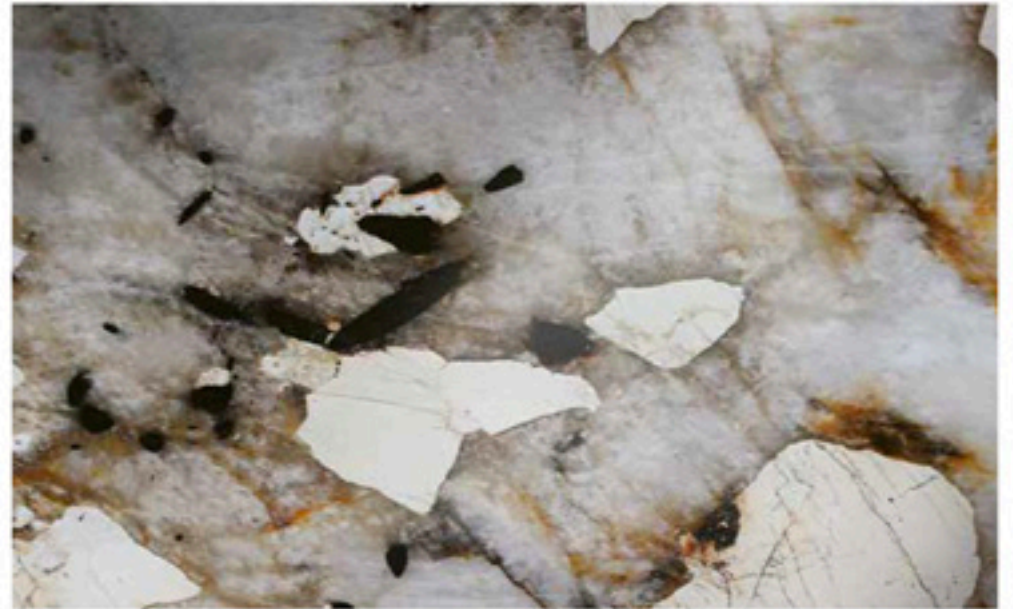
KOSMUS "A" (GRANITE)

LEATHER



PATAGONIA "ORIGINAL" (GRANITE)

LUX



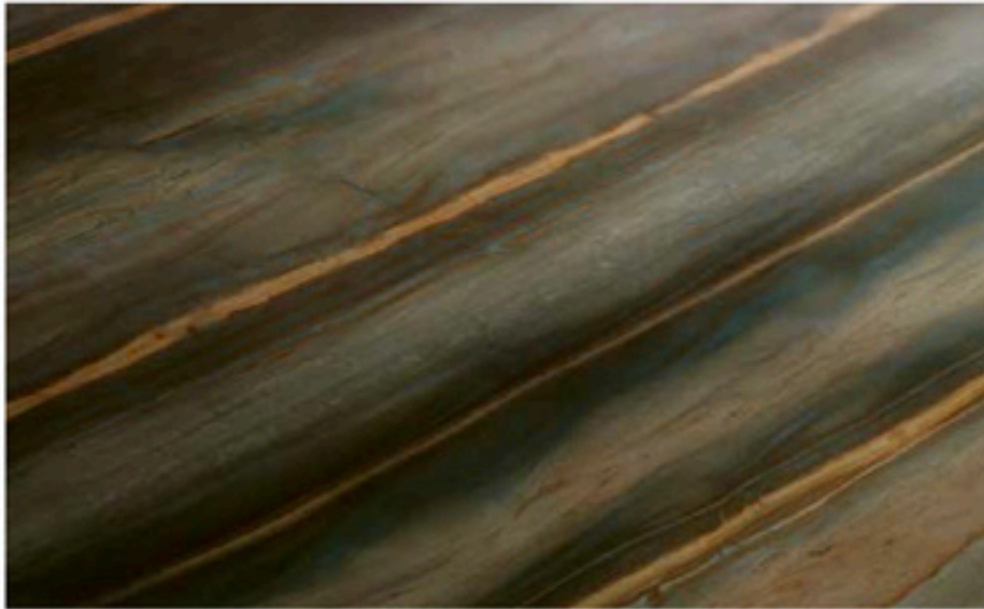
PATAGONIA "ORIGINAL" (GRANITE)

LEATHER

100%  
natural

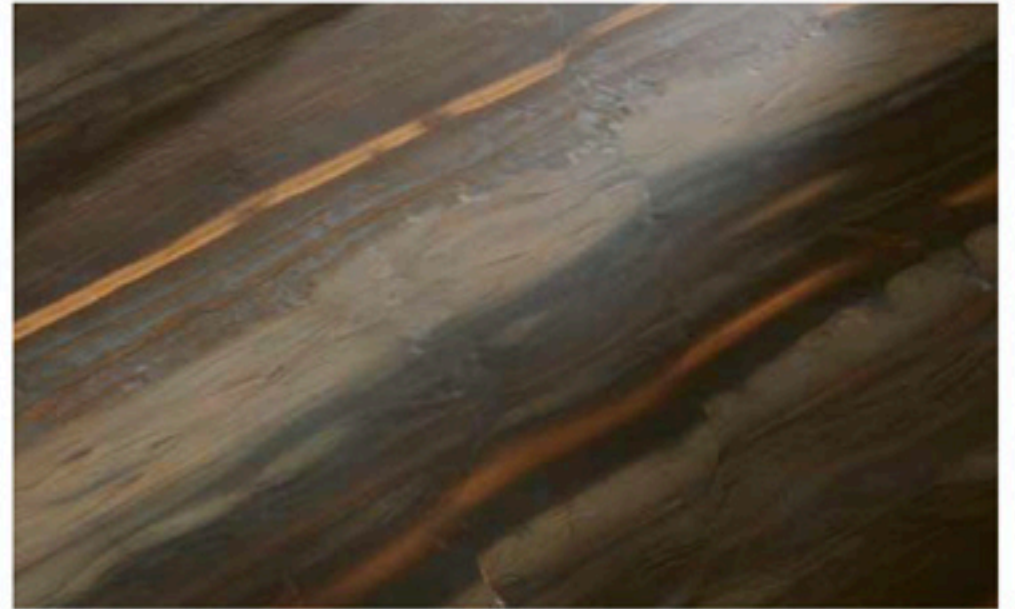


PATAGONIA "ORIGINAL"



ELEGANT BROWN ( QUARTZITE )

LUX



ELEGANT BROWN ( QUARTZITE )

LEATHER



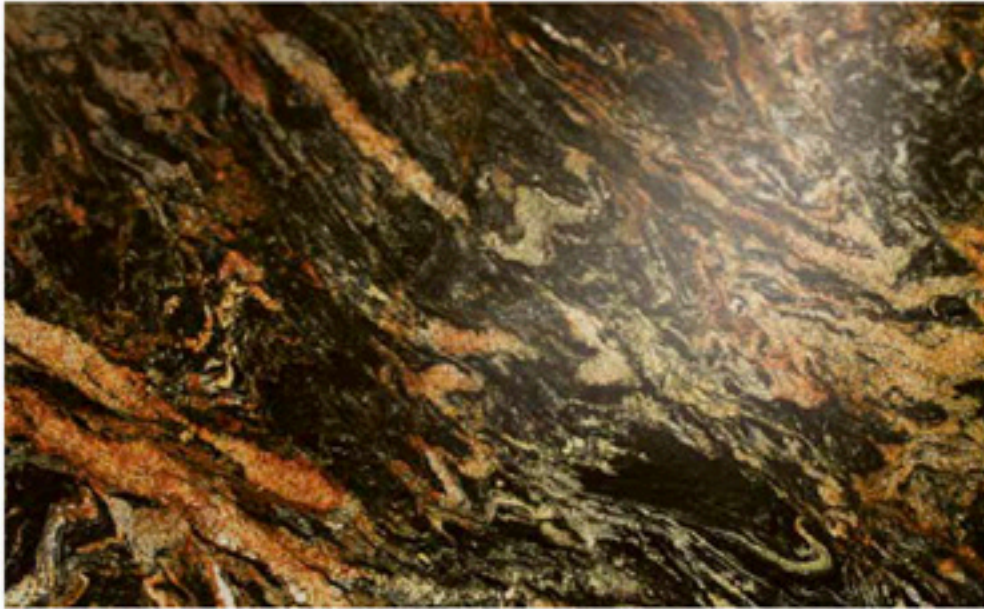
BRÈCHE DE VENDÔME ( MARBLE )

LUX



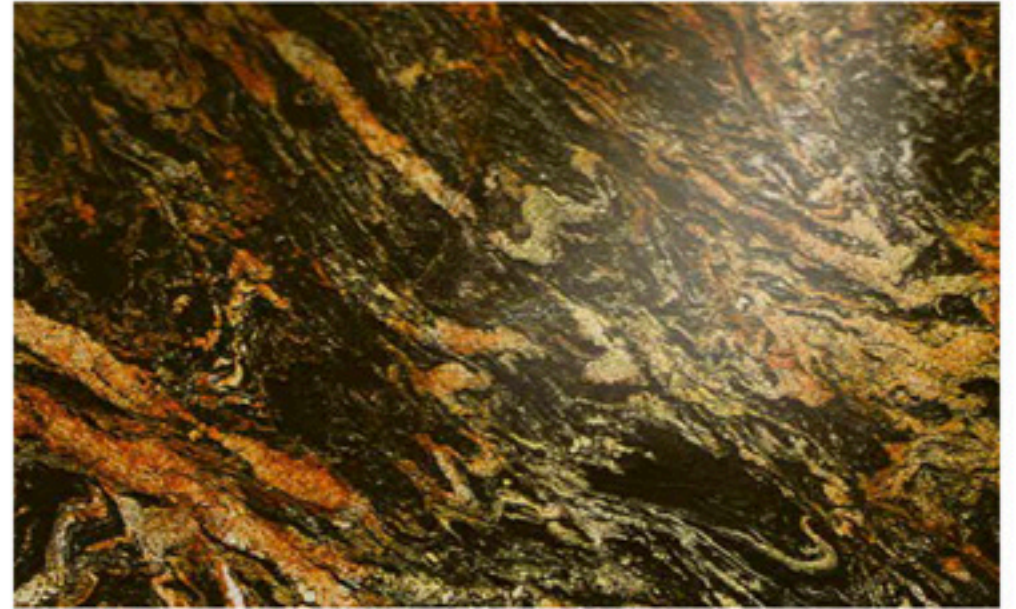
BRÈCHE DE VENDÔME ( MARBLE )

LEATHER



MAGMA GOLD ( GRANITE )

LUX



MAGMA GOLD ( GRANITE )

LEATHER



CREMA BEACH ( GRANITE )

LUX



CREMA BEACH ( GRANITE )

LEATHER



PYTHON BLACK



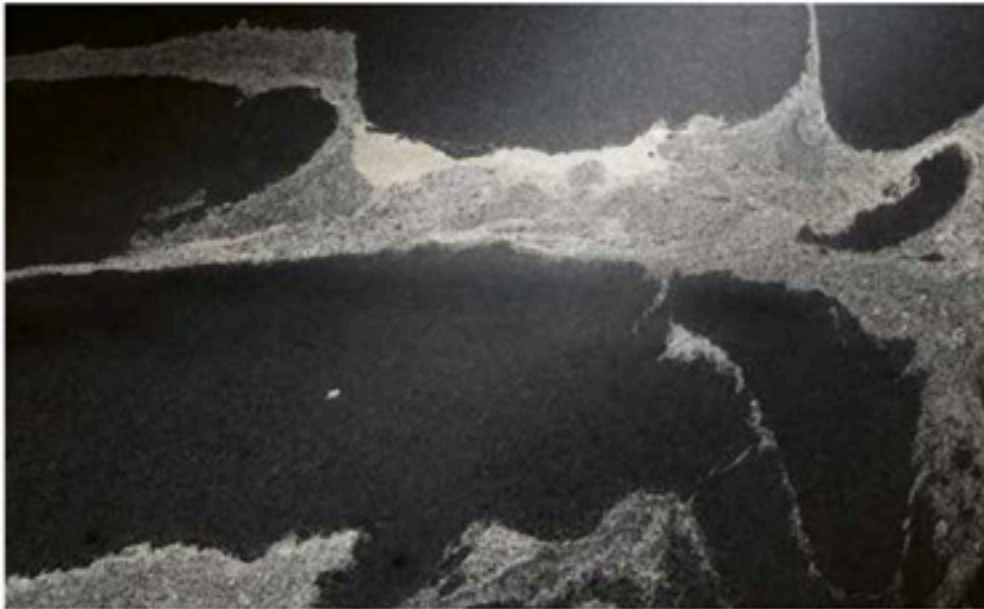
TAJ MAHAL ( QUARTZITE )

LUX



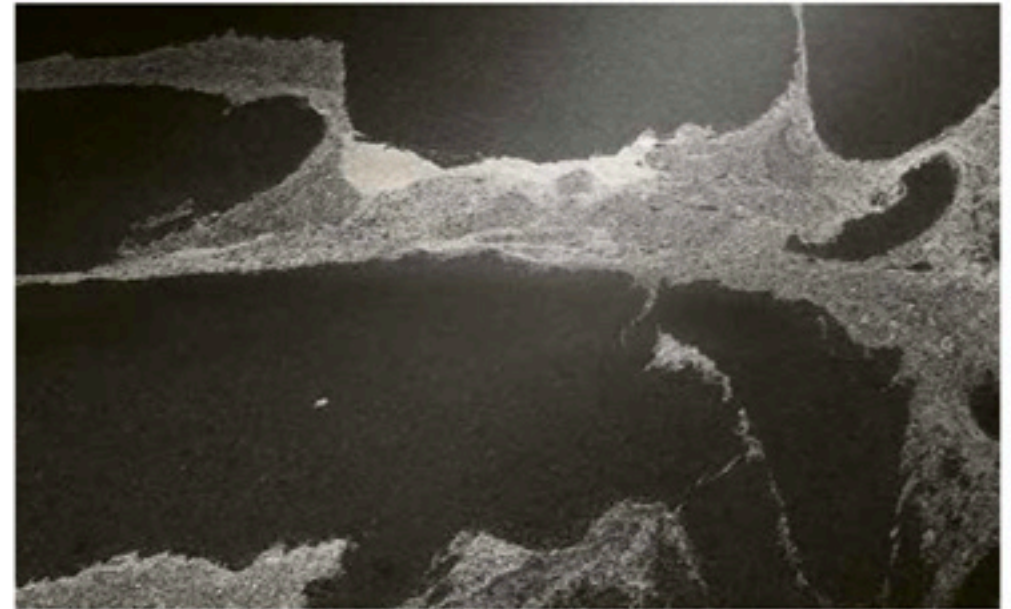
TAJ MAHAL ( QUARTZITE )

LEATHER



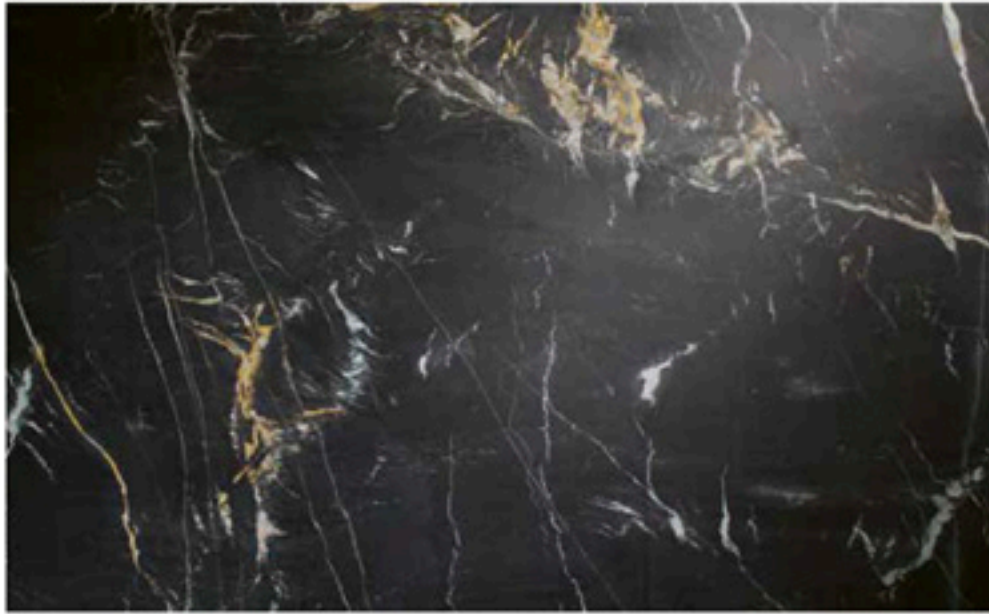
PYTHON BLACK ( GRANITE )

LUX



PYTHON BLACK ( GRANITE )

LEATHER



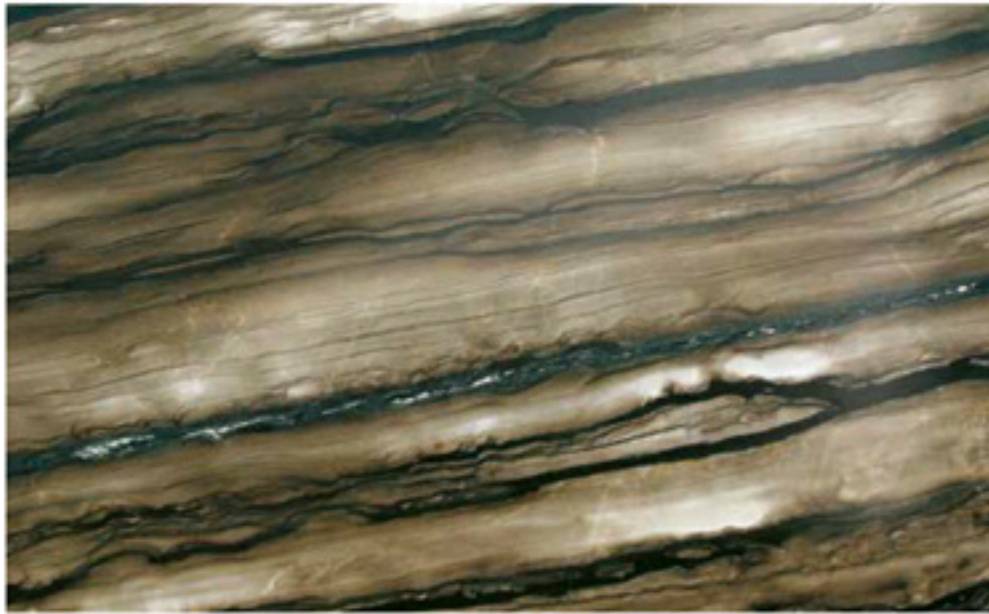
BELVEDERE ( GRANITE )

LUX



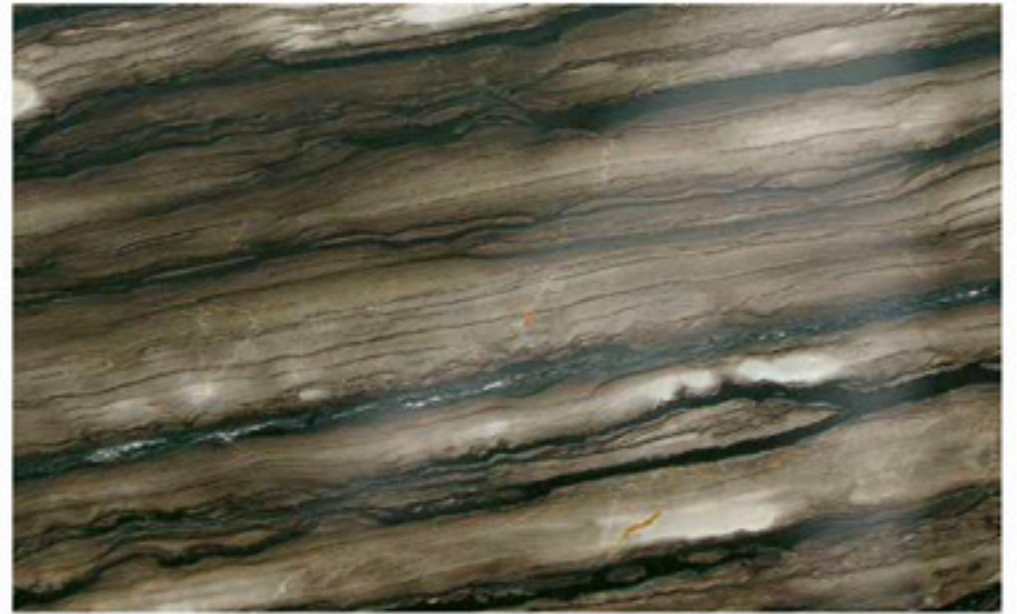
BELVEDERE ( GRANITE )

LEATHER



SEQUOIA BROWN ( SOFT QUARTZITE )

LUX



SEQUOIA BROWN ( SOFT QUARTZITE )

LEATHER





PERSIAN WHITE ( GRANITE )

LUX



PERSIAN WHITE ( GRANITE )

LEATHER



SANDALUS "VC." ( GRANITE )

LUX



SANDALUS "VC." ( GRANITE )

LEATHER



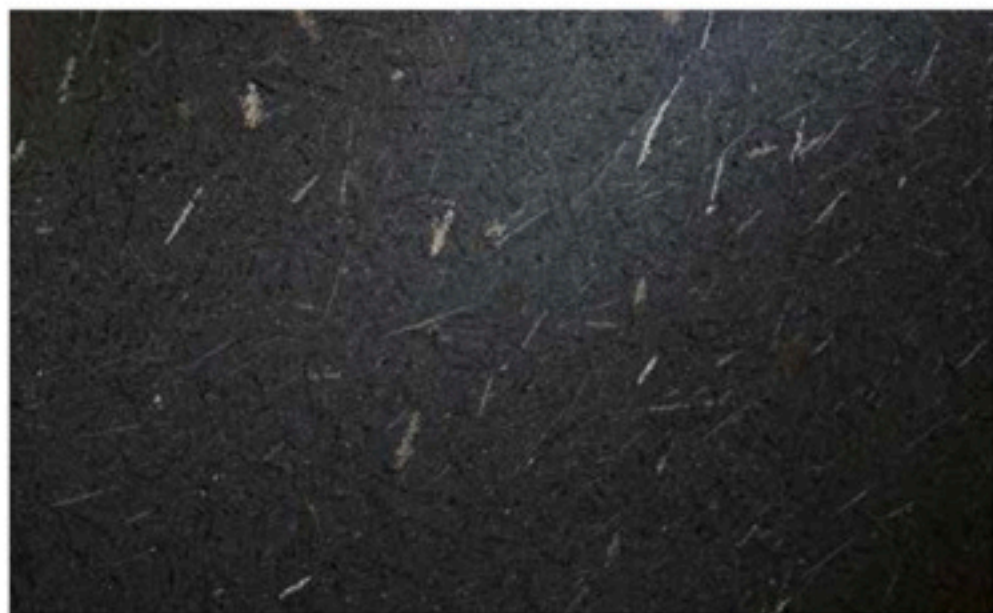
WHITE SUPER ( MARBLE )

LUX



WHITE SUPER ( MARBLE )

LEATHER



BLACK ICE ( GRANITE )

LUX



BLACK ICE ( GRANITE )

LEATHER

100%  
natural



BLACK ICE



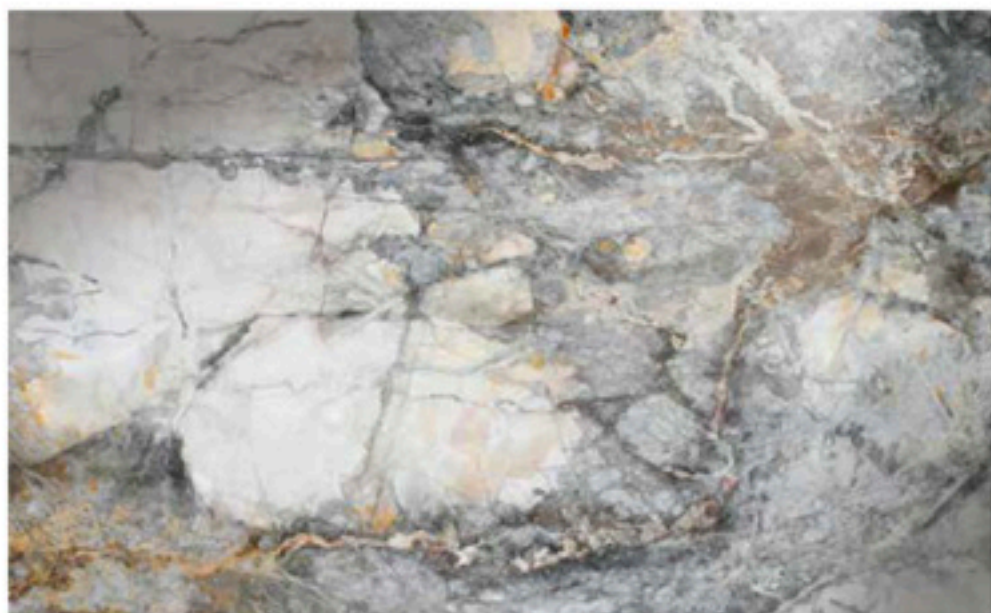
CALACATTA BRASIL ( QUARTZITE )

LUX



CALACATTA BRASIL ( QUARTZITE )

LEATHER



INVISIBLE GREYGOLD ( MARBLE )

LUX



INVISIBLE GREYGOLD ( MARBLE )

LEATHER



INVISIBLE GREY ( MARBLE )

LUX



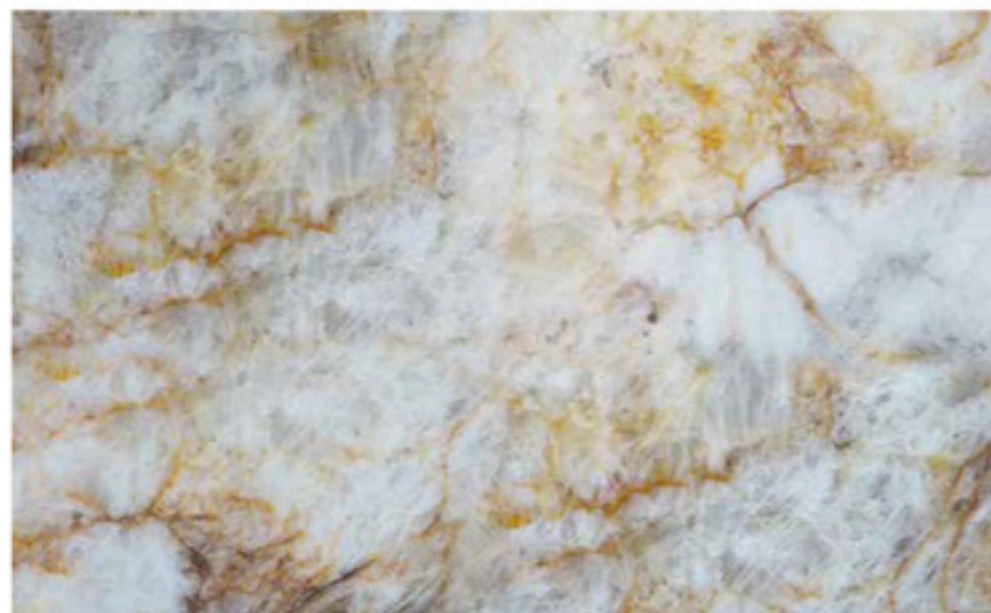
INVISIBLE GREY ( MARBLE )

LEATHER



CRISTALLO LUMIX ( NATURAL QUARTZ )

LUX

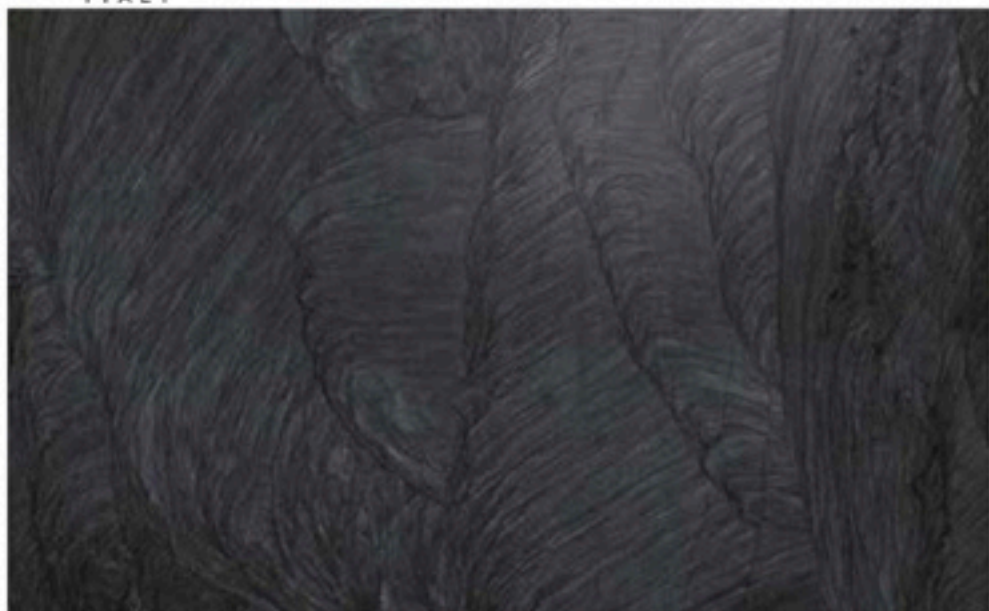


CRISTALLO LUMIX ( NATURAL QUARTZ )

LEATHER

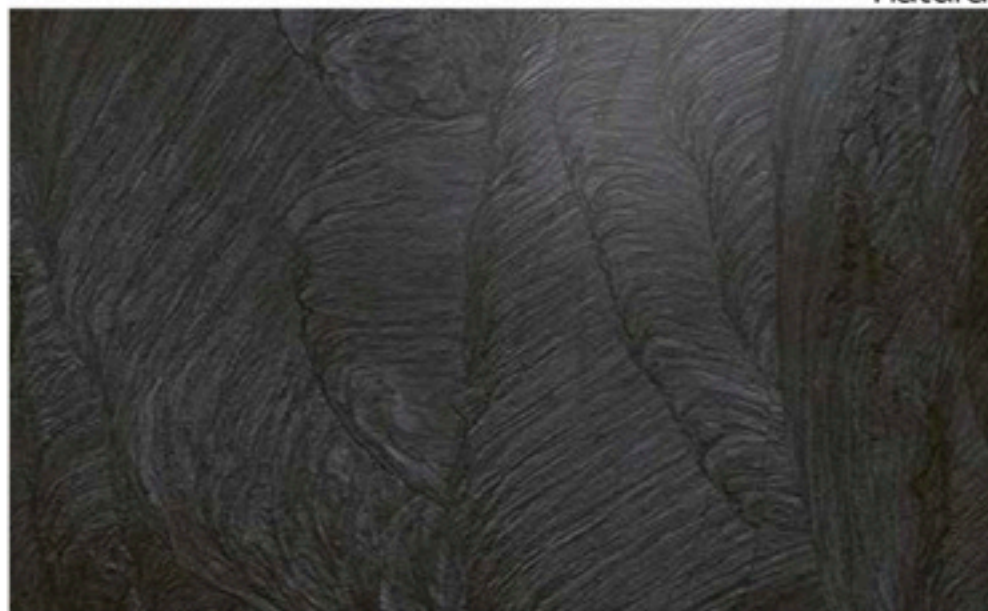


QUARZITE CHARME



QUARZITE PIOMBO "C.C." ( QUARTZITE )

LUX



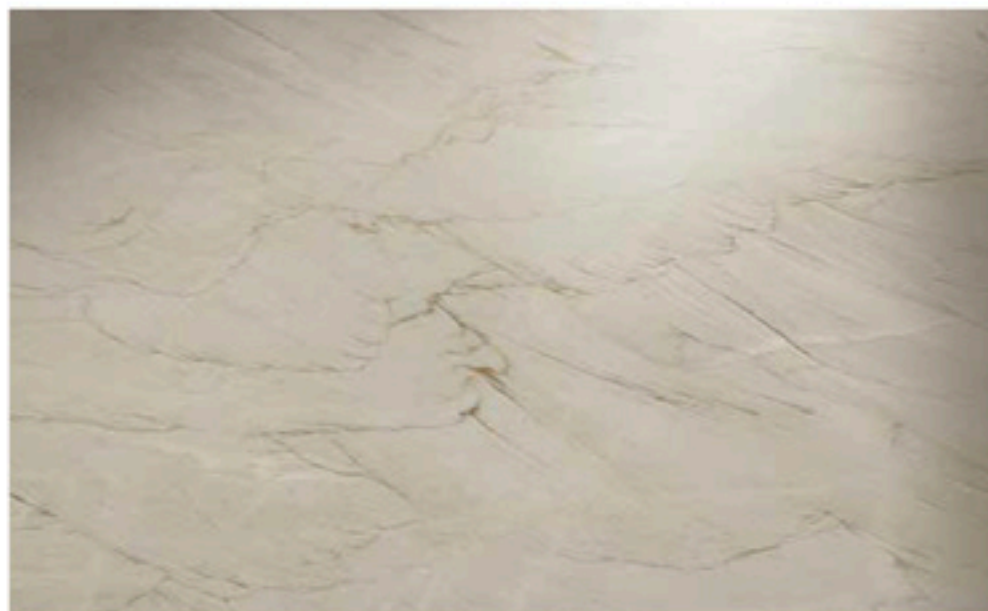
QUARZITE PIOMBO "C.C." ( QUARTZITE )

LEATHER



QUARZITE CHARME ( QUARTZITE )

LUX



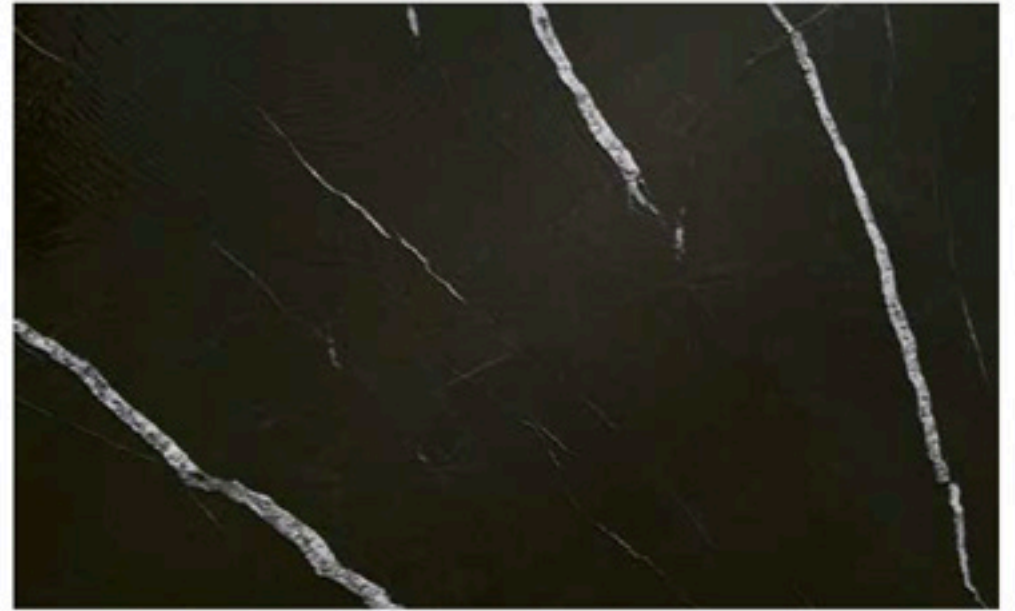
QUARZITE CHARME ( QUARTZITE )

LEATHER



NOIRBLANC ( SOFT QUARTZITE )

LUX



NOIRBLANC ( SOFT QUARTZITE )

LEATHER



BROWN CHOCOLATE ( GRANITE )

LUX



BROWN CHOCOLATE ( GRANITE )

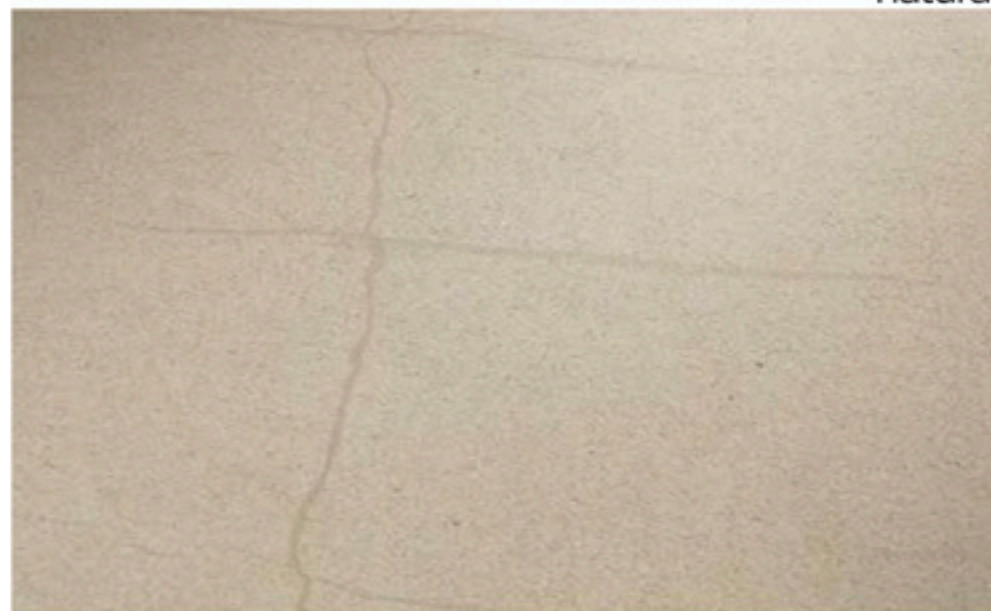
LEATHER





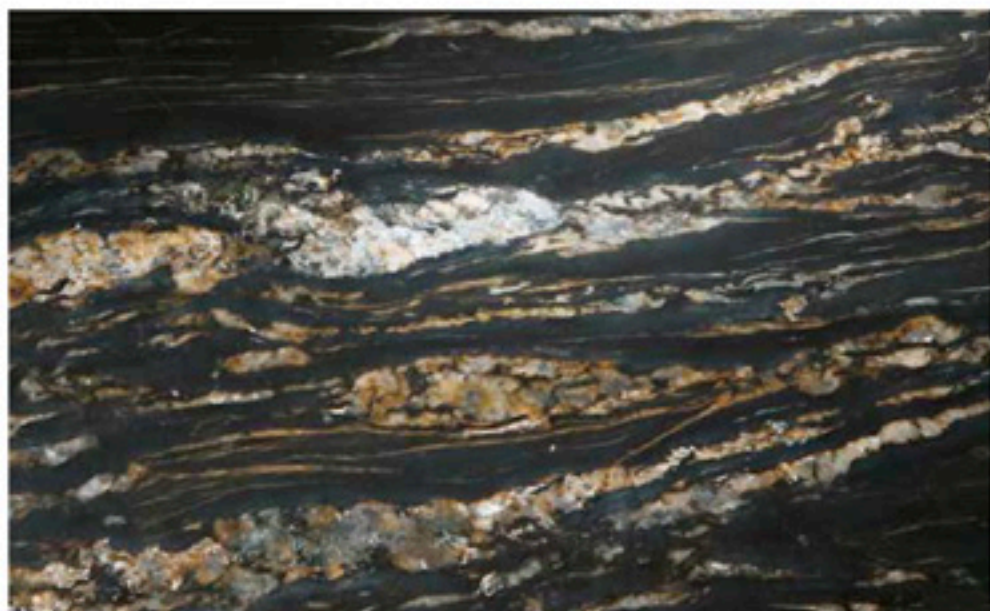
LINCOLN STONE "LV" ( MARBLE )

LEUX



LINCOLN STONE "LV" ( MARBLE )

LEATHER



TROPICAL STORM ( GRANITE )

LEUX



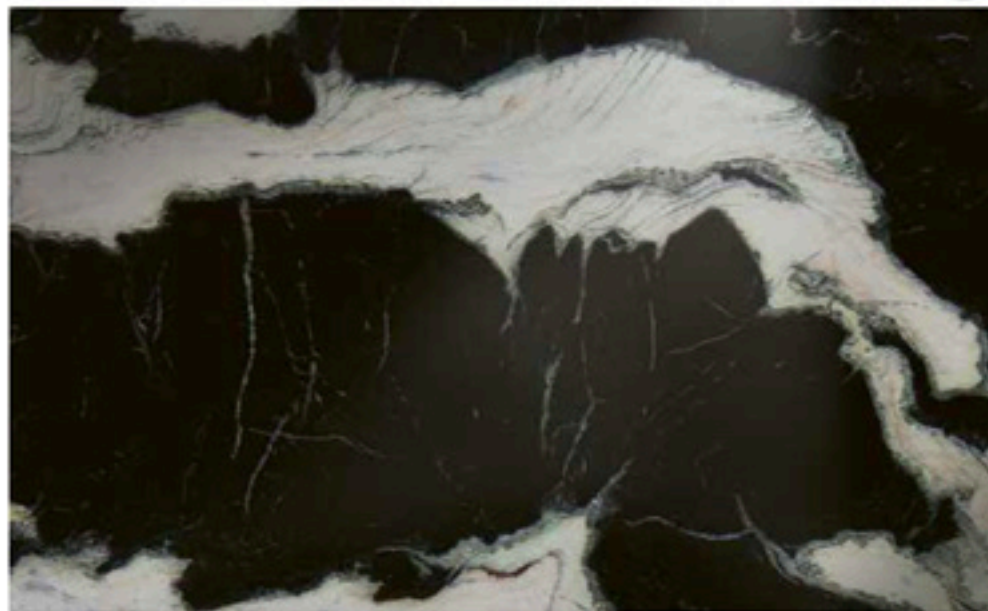
TROPICAL STORM ( GRANITE )

LEATHER



DALMATA ( MARBLE )

LUX



DALMATA ( MARBLE )

LEATHER



CALCITE AZUL "EXTRA" ( MARBLE )

LUX

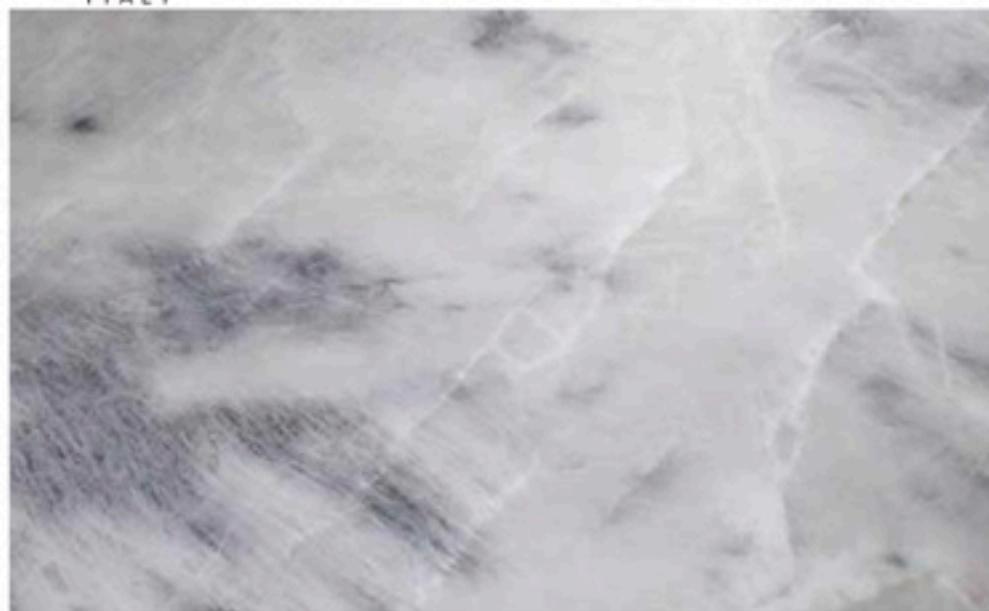


CALCITE AZUL "EXTRA" ( MARBLE )

LEATHER

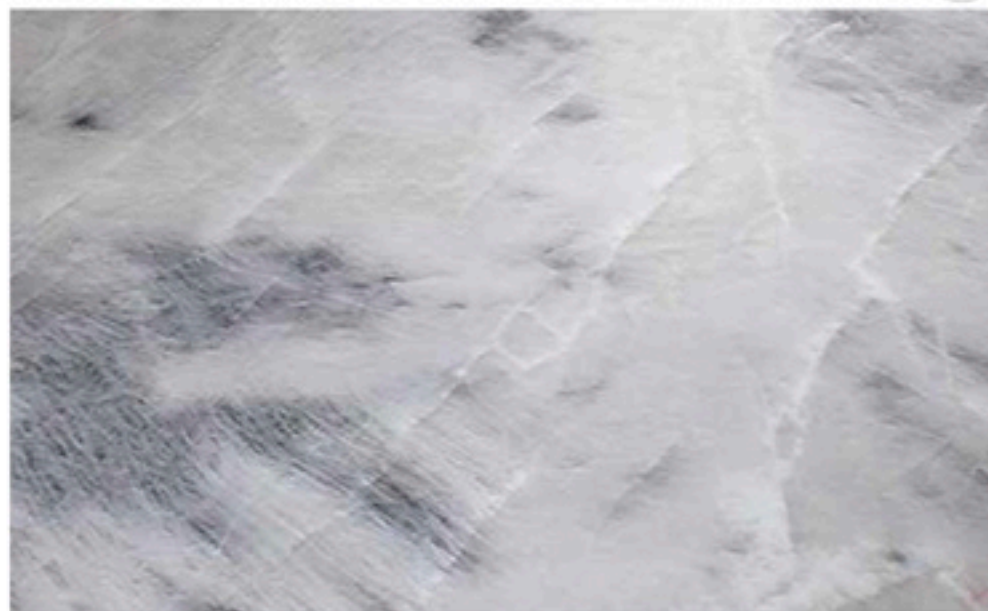
100%  
natural

CALCITE AZUL "EXTRA"



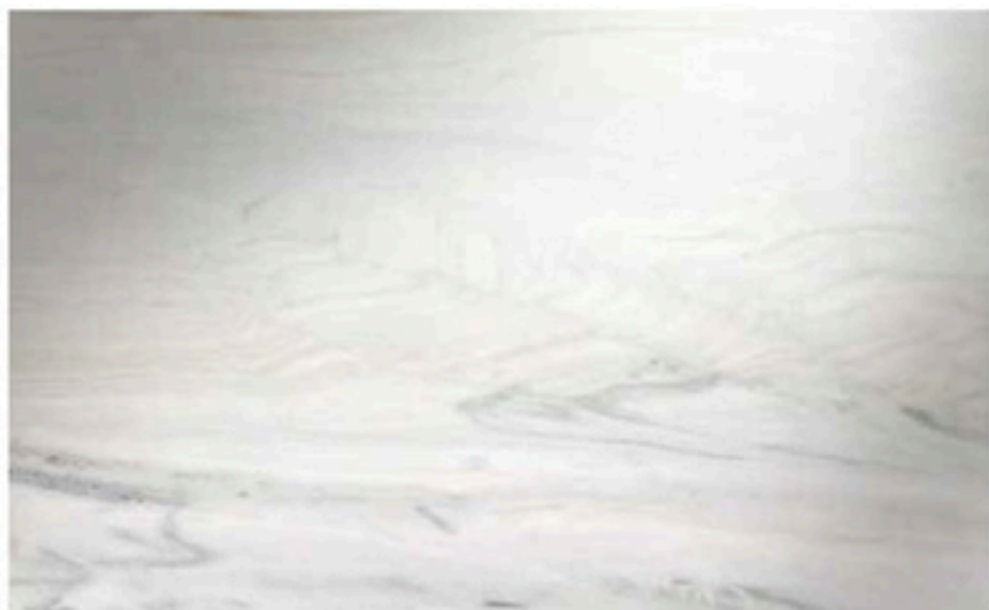
CRISTALLO AZUR ( NATURAL QUARTZ )

LUX



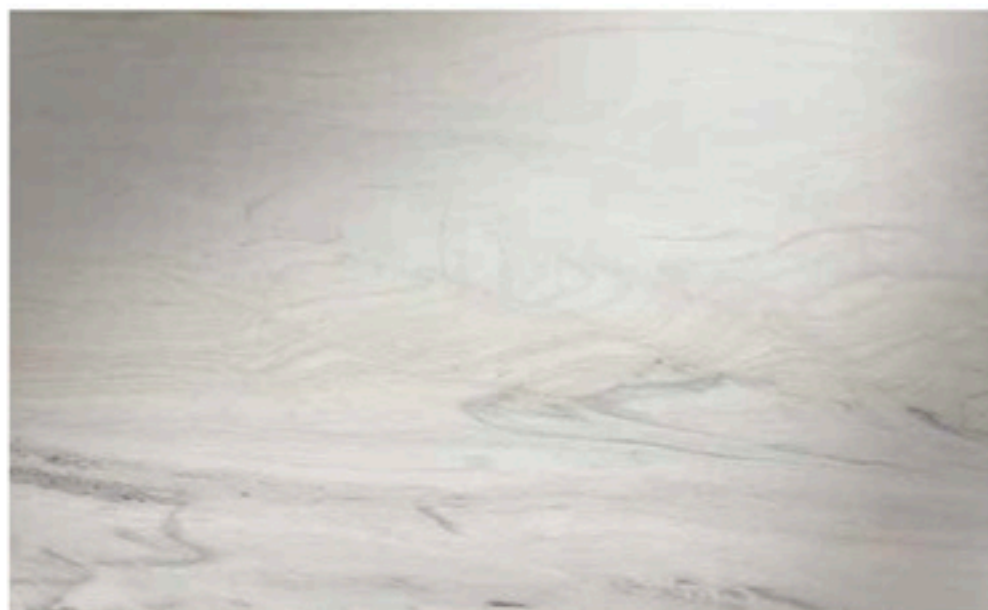
CRISTALLO AZUR ( NATURAL QUARTZ )

LEATHER



BIANCO LASA | COVELANO "FANTASTICO" ( MARBLE )

LUX



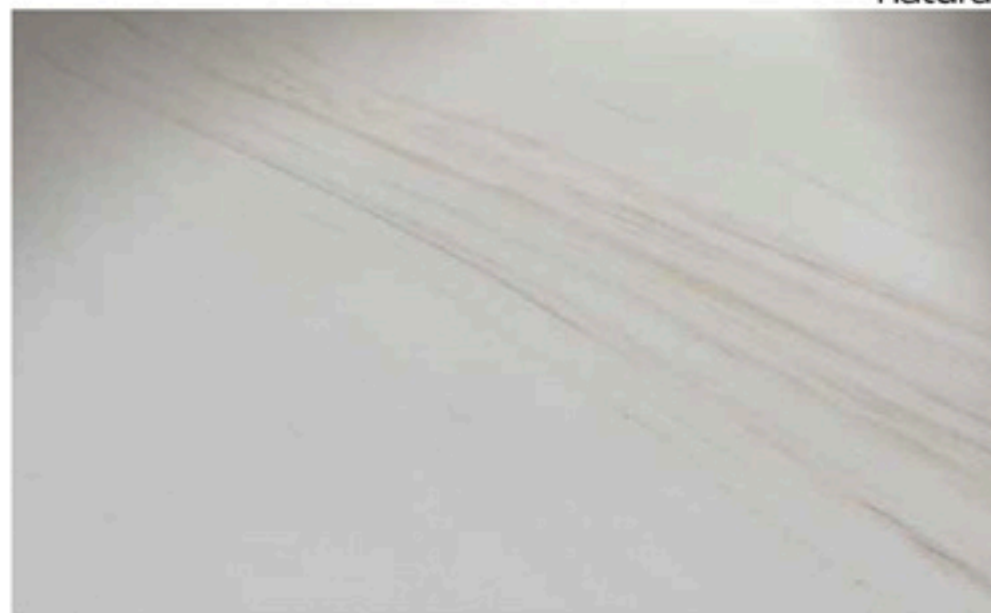
BIANCO LASA | COVELANO "FANTASTICO" ( MARBLE )

LEATHER



BIANCO LASA | COVELANO "VENA ORO" ( MARBLE )

LUX



BIANCO LASA | COVELANO "VENA ORO" ( MARBLE )

LEATHER



AZUL MACAUBAS ( QUARTZITE )

LUX



AZUL MACAUBAS ( QUARTZITE )

LEATHER

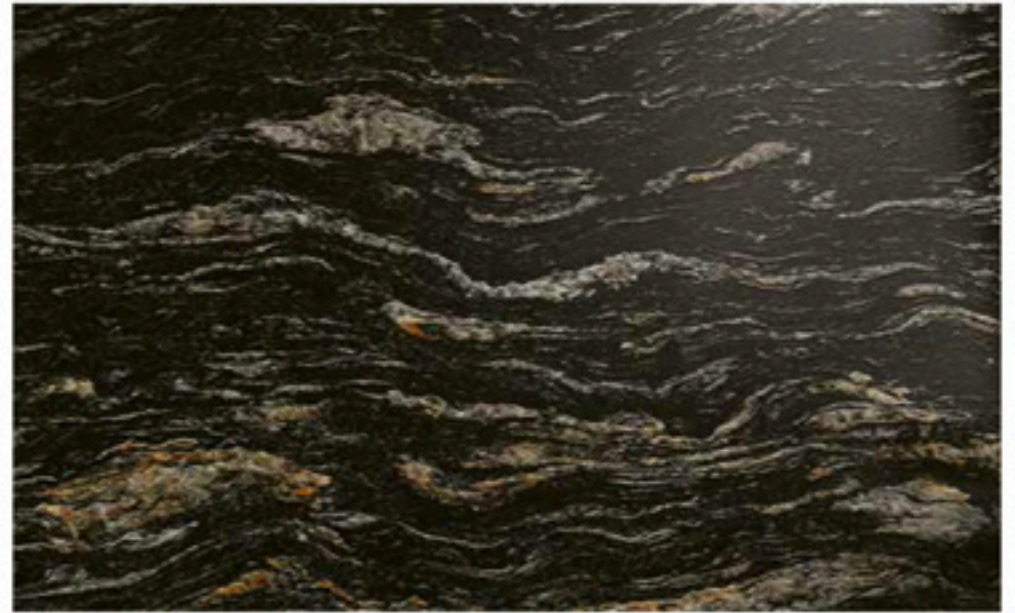


BLACK COSMIC



BLACK COSMIC ( GRANITE )

LUX



BLACK COSMIC ( GRANITE )

LEATHER



COPPER DUNE ( QUARTZITE )

LUX



COPPER DUNE ( QUARTZITE )

LEATHER



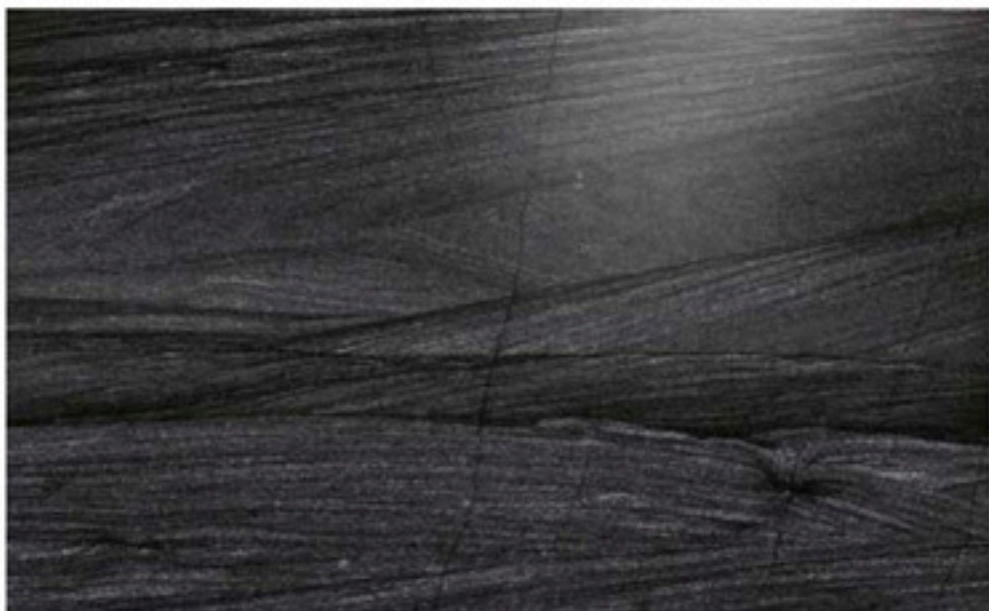
DEDALUS ( SOFT QUARTZITE )

LUX



DEDALUS ( SOFT QUARTZITE )

LEATHER



QUARZITE PIOMBO "VC" ( QUARTZITE )

LUX



QUARZITE PIOMBO "VC" ( QUARTZITE )

LEATHER





SPECTROLITE BLUE (GRANITE)

LUX



SPECTROLITE BLUE (GRANITE)

LEATHER



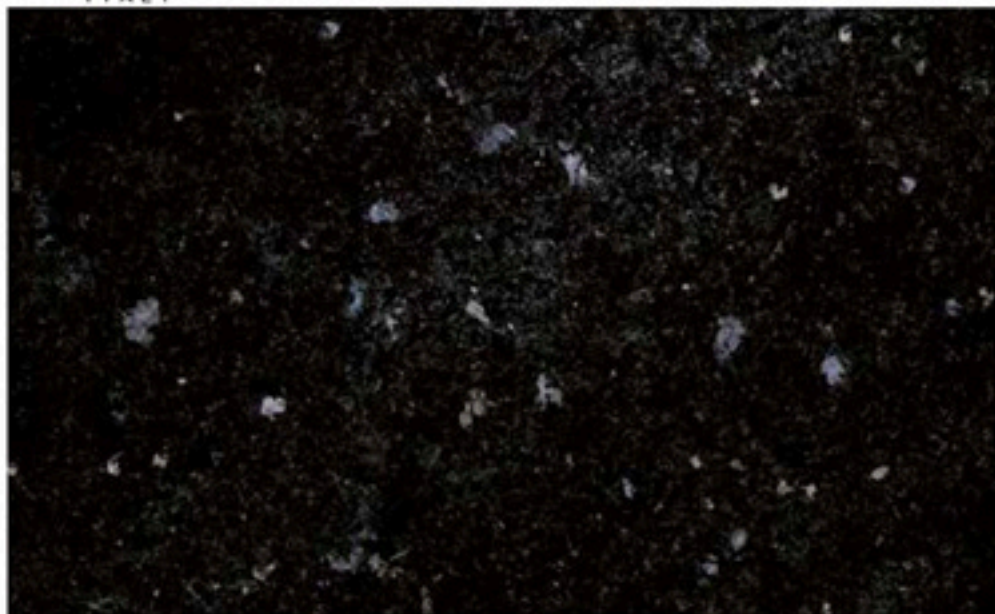
KAYRUS (GRANITE)

LUX



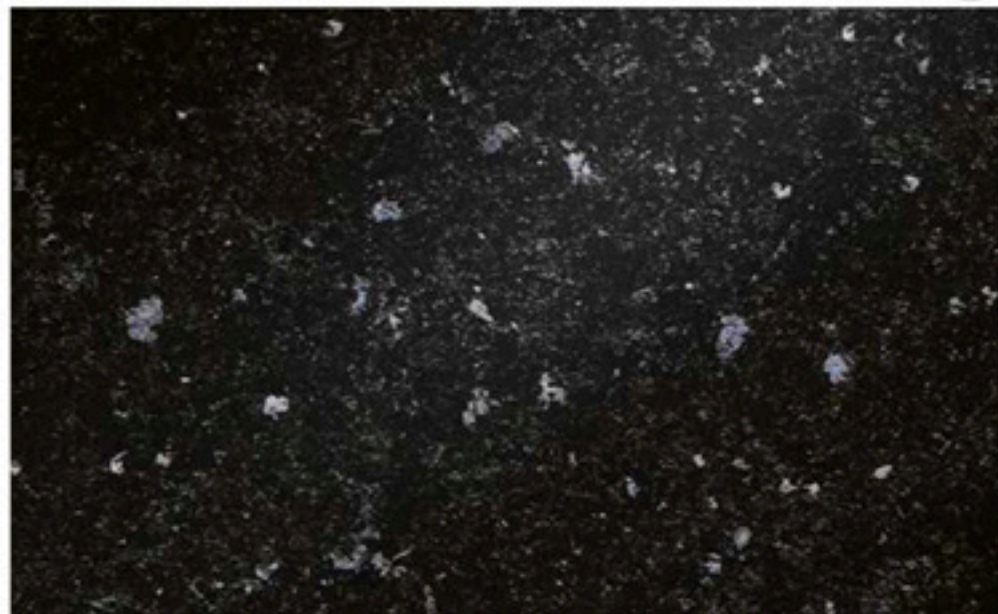
KAYRUS (GRANITE)

LEATHER



NEW GALAXY ( GRANITE )

LUX



NEW GALAXY ( GRANITE )

LEATHER



CALACATTA CIELO ( MARBLE )

LUX



CALACATTA CIELO ( MARBLE )

LEATHER

100%  
natural



CALACATTA CIELO

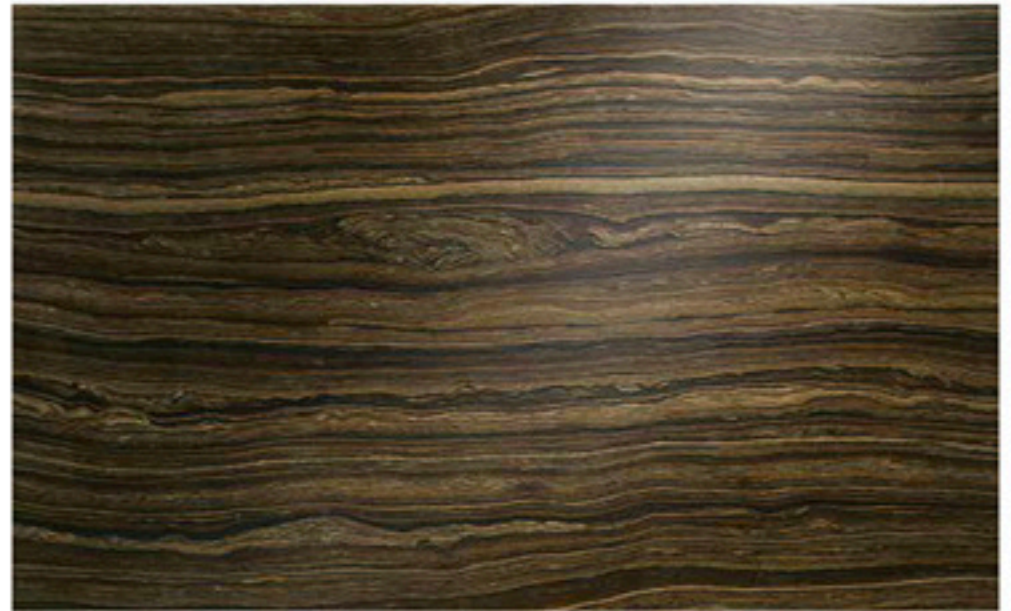


MAGIC BROWN



MAGIC BROWN "VC" ( MARBLE )

LUX



MAGIC BROWN "VC" ( MARBLE )

LEATHER



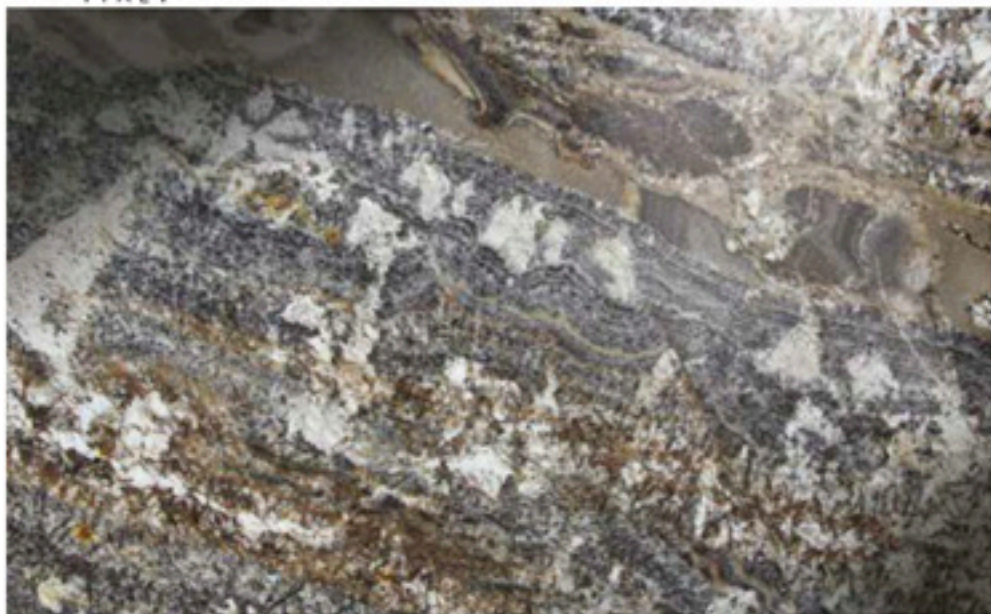
MAGIC BROWN "CC" ( MARBLE )

LUX



MAGIC BROWN "CC" ( MARBLE )

LEATHER



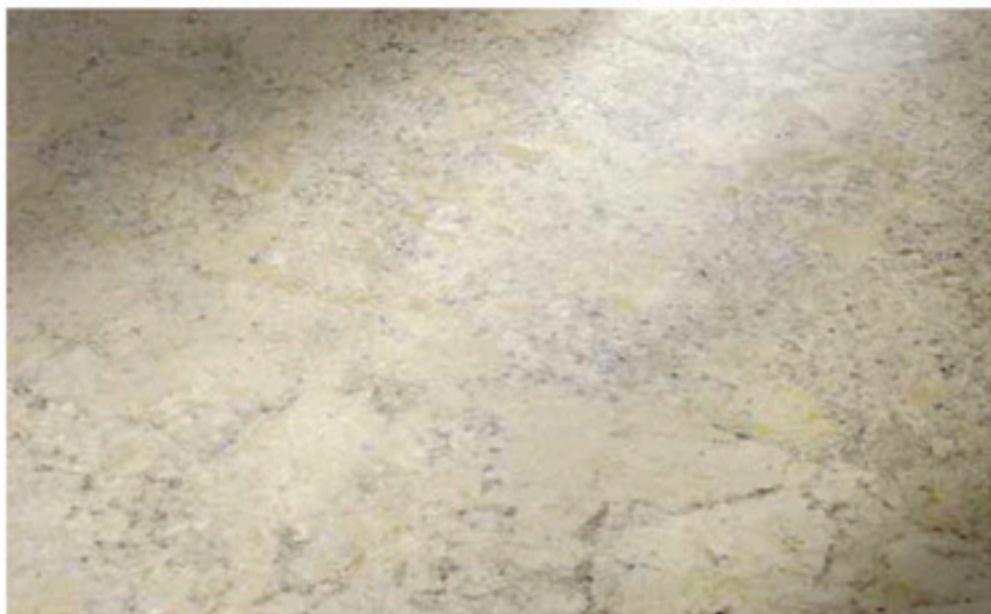
MONTANA TAUPE (GRANITE)

LUX



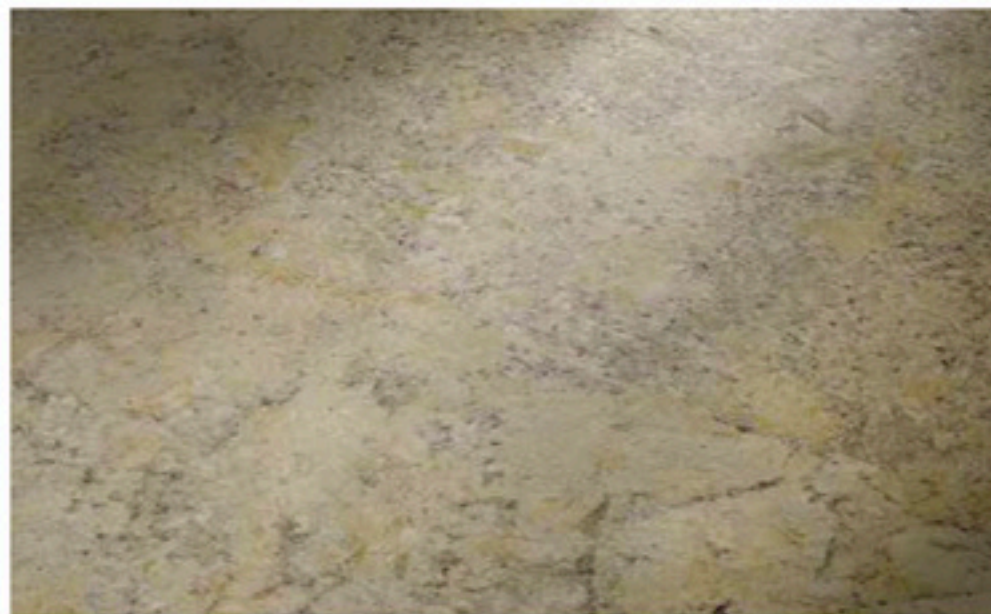
MONTANA TAUPE (GRANITE)

LEATHER



PERSA AVORO (GRANITE)

LUX



PERSA AVORO (GRANITE)

LEATHER

100%  
natural



PERSA AVORIO



LOUISE BLUE





CRISTALLO TROPICALE ( NATURAL QUARTZ )

EGOX



CRISTALLO TROPICALE ( NATURAL QUARTZ )

LEATHER



LOUISE BLUE ( QUARTZITE )

EGOX



LOUISE BLUE ( QUARTZITE )

LEATHER



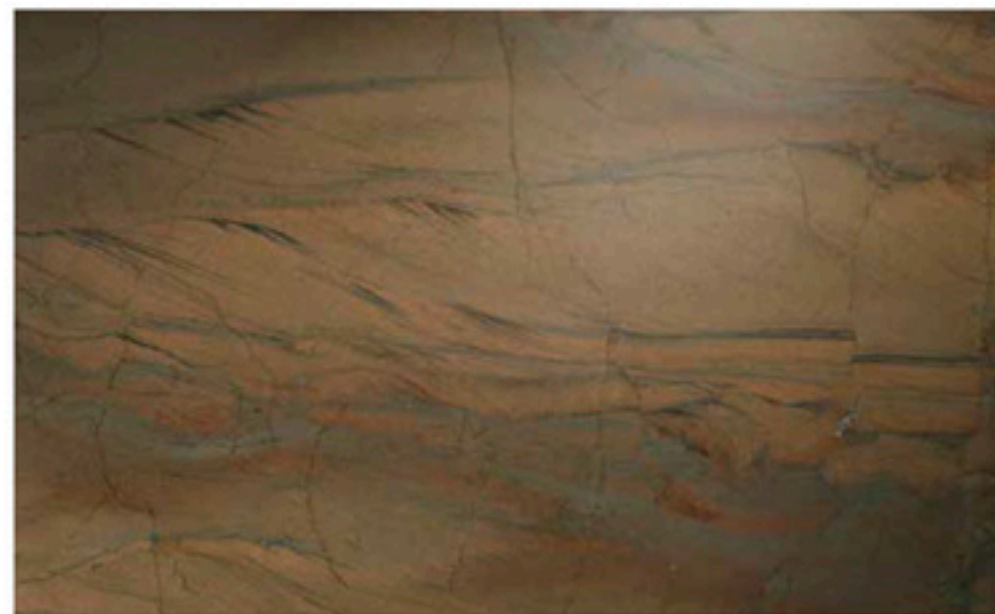
CAMOUFLAGE ( MARBLE )

LUX



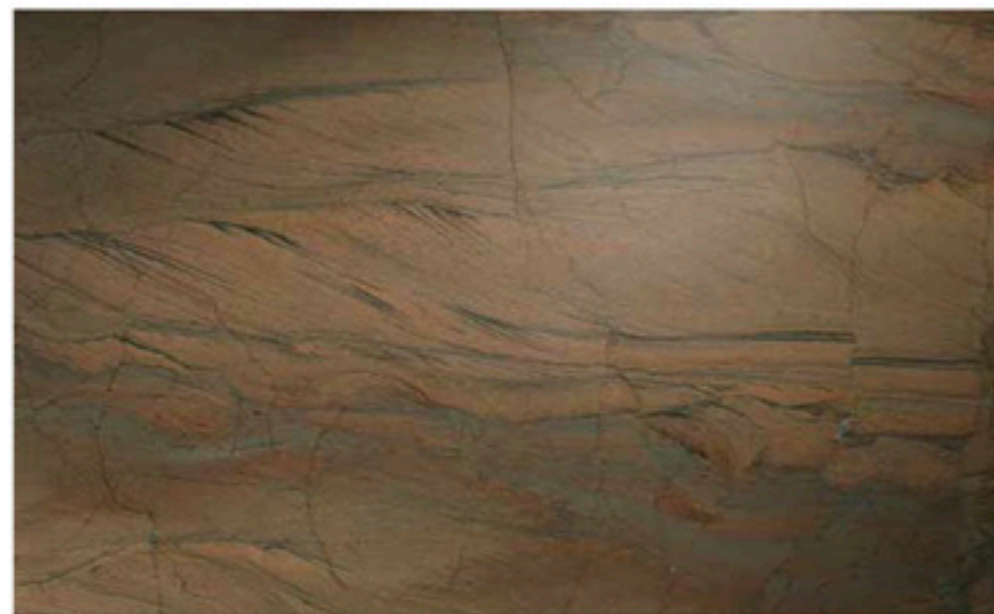
CAMOUFLAGE ( MARBLE )

LEATHER



ELEGANT DUNE ( QUARTZITE )

LUX



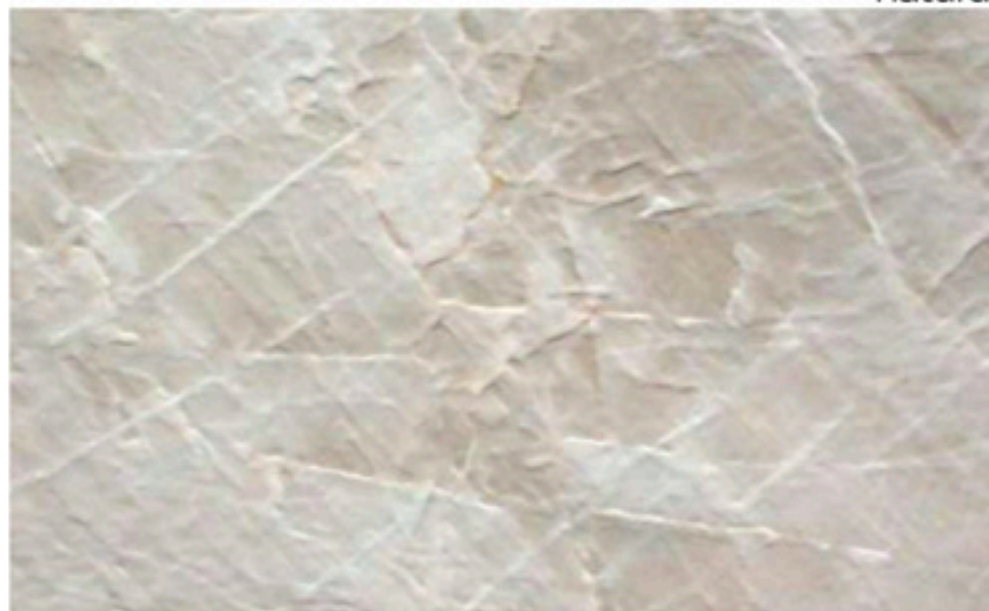
ELEGANT DUNE ( QUARTZITE )

LEATHER



QUARZITE ONIX ( QUARTZITE )

LUX



QUARZITE ONIX ( QUARTZITE )

LEATHER



SANDALUS "C.C." ( GRANITE )

LUX



SANDALUS "C.C." ( GRANITE )

LEATHER



QUARTZITE GLACIER "C.C." ( QUARTZITE )

LUX



QUARTZITE GLACIER "C.C." ( QUARTZITE )

LEATHER



IRISH GREEN ( MARBLE )

LUX



IRISH GREEN ( MARBLE )

LEATHER

100%  
natural

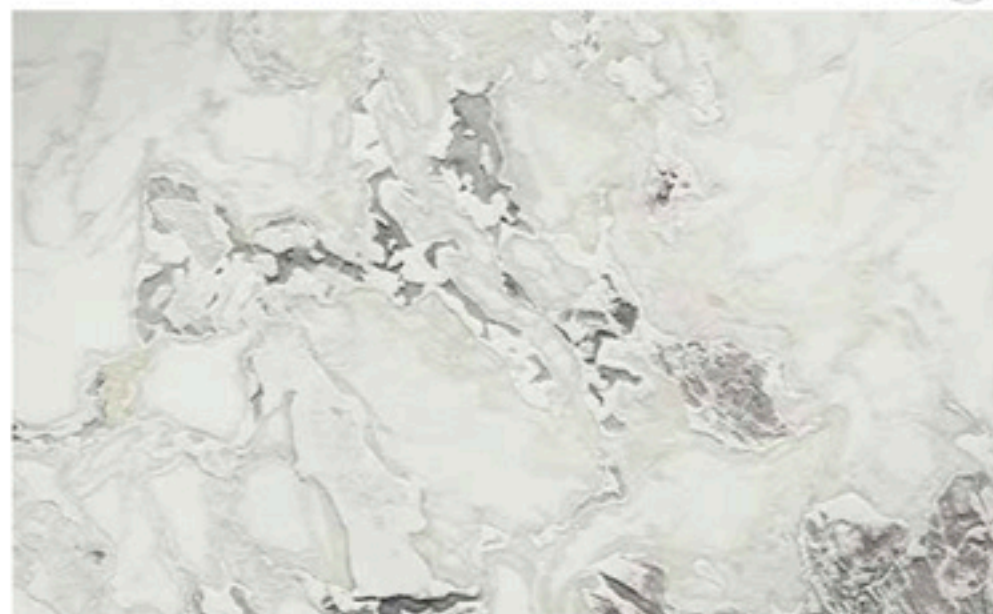


IRISH GREEN



DOVER WHITE ( MARBLE )

LUX



DOVER WHITE ( MARBLE )

LEATHER



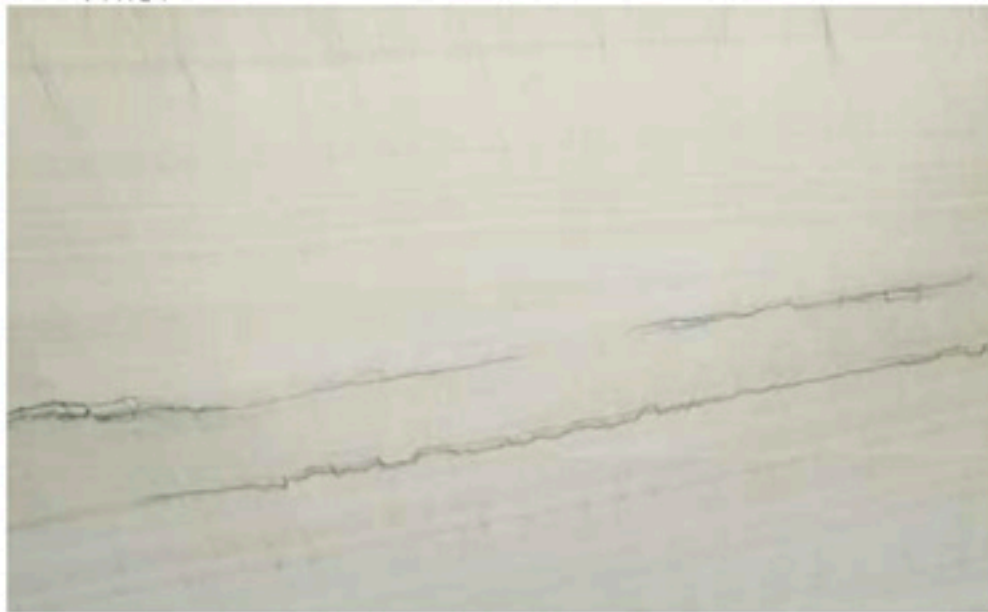
CREMA CIELO ( MARBLE )

LUX



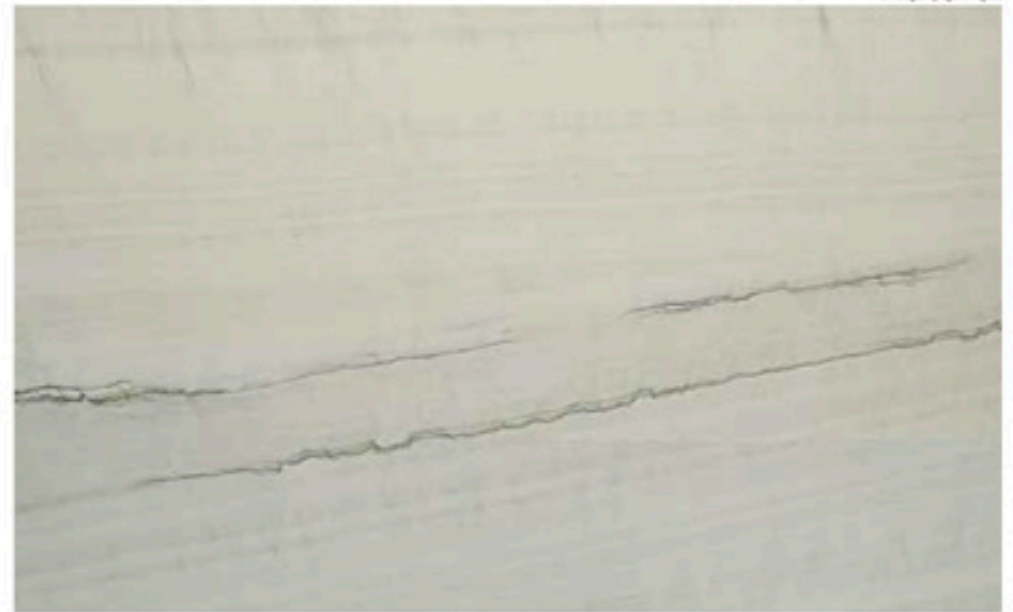
CREMA CIELO ( MARBLE )

LEATHER



QUARTZITE GLACIER "VC" ( QUARTZITE )

LUX



QUARTZITE GLACIER "VC" ( QUARTZITE )

LEATHER



TAUPE WHITE ( GRANITE )

LUX



TAUPE WHITE ( GRANITE )

LEATHER



QUARZITE MICHELANGELO





CRISTALLO JULIET (NATURAL QUARTZ)

LUX



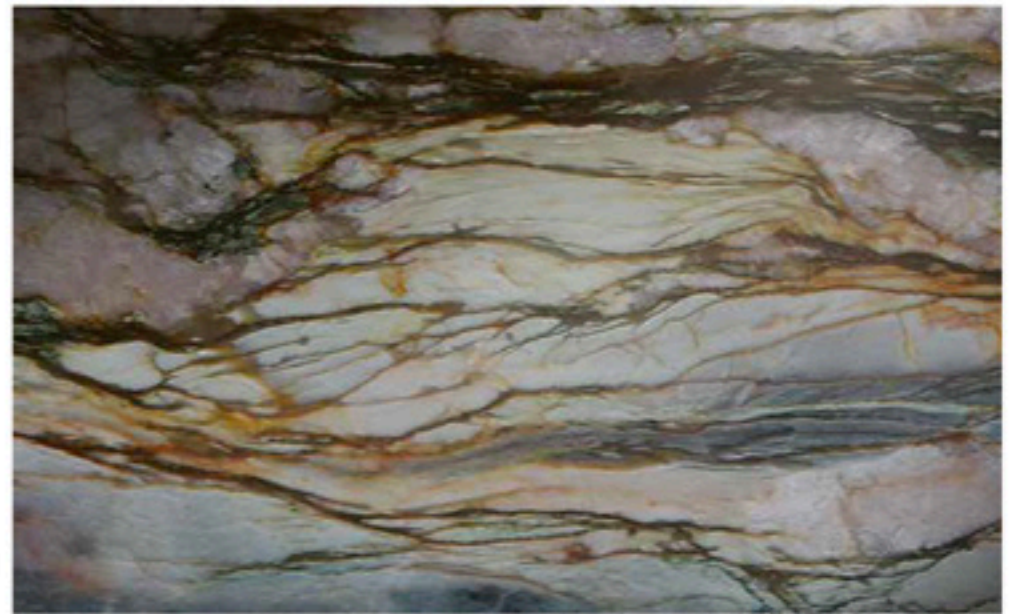
CRISTALLO JULIET (NATURAL QUARTZ)

LEATHER



QUARZITE MICHELANGELO (QUARTZITE)

LUX



QUARZITE MICHELANGELO (QUARTZITE)

LEATHER

# T Y P E S   A N D   U S E S   O F   S T O N E

Mineral - contains quartz, feldspars and silic. Mineral stones were originally produced by volcanic activity. Includes granite, quartzite, serpentine and soapstone.

## GRANITE

Granite - an igneous rock of volcanic origin, usually containing 10 to 50 percent quartz, at least 50 percent feldspar and some silica. Most granites are resistant to abrasion, weathering and chemicals. Feldspars give them their color. Volcanic flows that cooled slowly have bigger crystals while flows that cooled rapidly have very small crystals.

## QUARTZITE

Quartzite - a sedimentary rock composed of fine grains of quartz sand (0.6mm to 2mm diameter) bonded by a cementing material, commonly silica, iron oxide or calcium carbonate. Quartzite is usually very dense, hard to scratch and abrasion resistant. It often features veins and complex color patterns similar in appearance to marble.

## SERPENTINE

Serpentine- a metamorphic rock composed predominantly of magnesium silicate. Typically green in color. Serpentine are thought to be formed very deep undersea by magma emerging through cracks in the ocean floor, at temperatures up to around 500 degrees Celsius. Serpentine are very dense, abrasion and chemical resistant though they are typically classified as softer granites.

## SOAPSTONE

Soapstone is a serpentine containing talc which makes it feel like a bar of soap. The talc also makes it easy to scratch, a characteristic preferred in rustic décor. Often used as countertops in chemistry labs, where its resistance to acids is important, and on fireplaces where its unique heat-retention characteristic is valued.

Organic - contains calcium, typically from shells and bones of fish. Limestone is the mother stone of marble, travertine and onyx.

## LIMESTONE

Limestone - a sedimentary rock consisting chiefly of the mineral calcite ( $\text{CaCO}_3$ ). Often contains fossils or shell formations, formed as bones and shells of fish accumulated on the sea floor. Ancient seabeds have become hills and mountains, allowing quarrying. Often very dense and durable, limestone has been used for paving, counters and wall cladding on exterior and interior surfaces for thousands of years.

## MARBLE

Marble - a metamorphic rock consisting of coarse grained re-crystallized calcite. Most marbles were originally limestones, that underwent tremendous pressure and heat, causing the limestone to melt then recrystallize. In most cases the resulting stone, marble, is more dense and durable than limestone.

## TRAVERTINE

Travertine - a sedimentary rock, travertine is a type of limestone that formed by evaporation of hot water containing dissolved calcium, thus leaving finely crystallized calcite deposits. These deposits accumulate in horizontal layers over thousands of years. The holes in travertine are the pathways for the water as it passed up from the geothermal springs below. Its natural color is white. The other colors come from chemicals in the water and other debris, including ash from fires and volcanoes, animal remains and vegetation. Travertine is very durable, often used for exterior wall cladding and paving installations around the world.

## ONYX

Onyx - a compact sedimentary rock is a type of limestone that formed by evaporation of cold water containing dissolved calcium, leaving a translucent variety of calcite, often in the form of stalagmites and stalactites inside caves. Its natural color is translucent white. The other colors usually come from minute concentrations of chemicals carried by water dripping into the cave. Onyx is extremely dense but lacking in bending strength. It is often used for interior counters, wall claddings and flooring.

*marble*

# FINISHES

*granite*



IRISH GREEN

LUX



IRISH GREEN

MATT



IRISH GREEN

LEATHER



IRISH GREEN

RIVEN



IRISH GREEN

HYDRO

Some finishes are not available on all materials due to their inherent characteristics.



BROWN CHOCOLATE

LUX



BROWN CHOCOLATE

LEATHER



BROWN CHOCOLATE

RIVEN



BROWN CHOCOLATE

HYDRO



BROWN CHOCOLATE

FLAMED

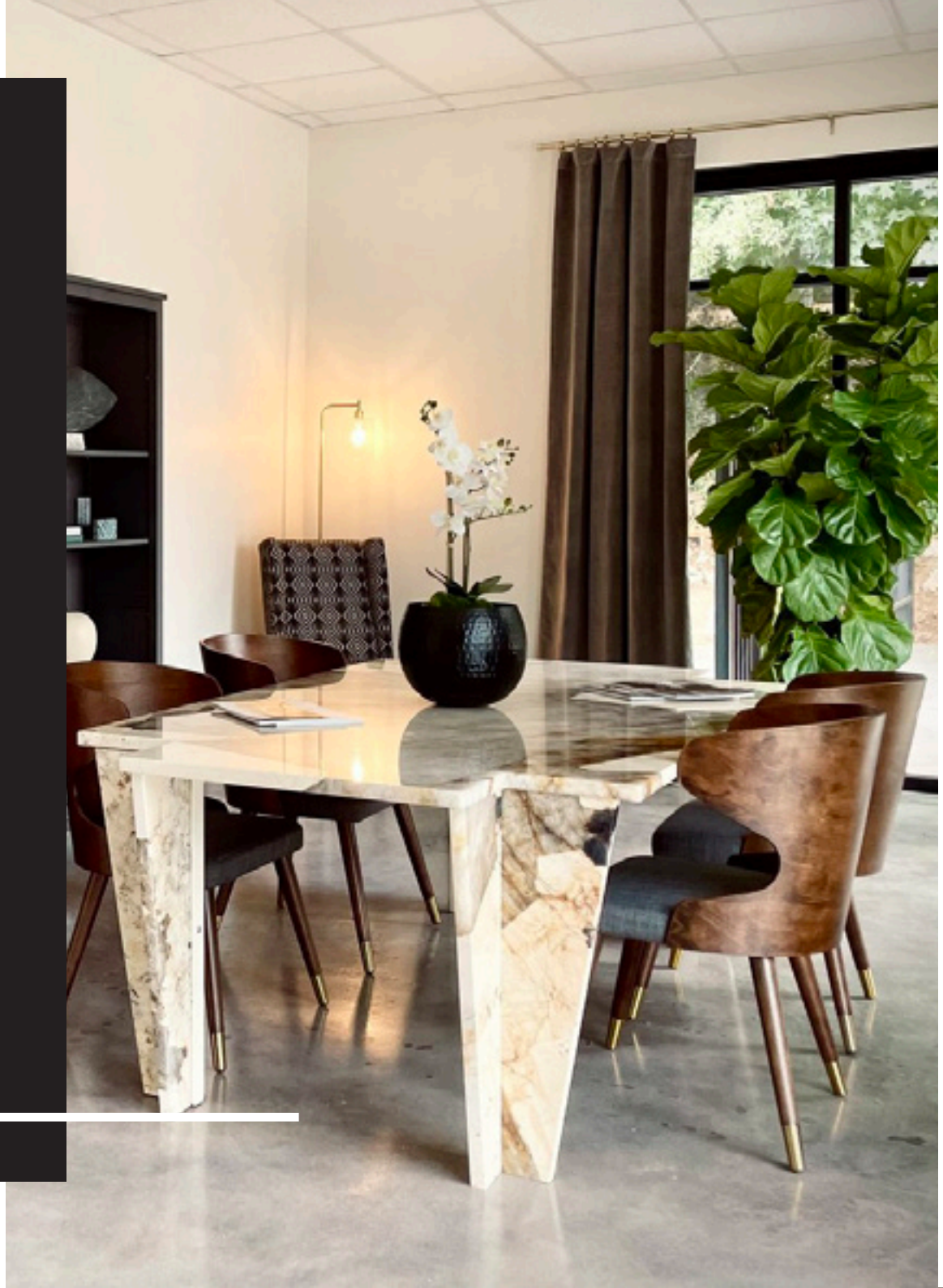
# Salotto

## Have you experienced a work room that gathers iconic inspiration?

The Salotto is a creative environment that inspires possibilities, engaging interactive expertise in a beautiful space.

To truly explore the limitless natural stone opportunities of your project, enlist the expertise that exists only through the Salotto.

In a world of imitations and limitations, the Salotto ignites your project with creative choices. Within this space we offer the very best expertise and personal touch for your project. We discover various stone finishes, examine textures, and study feasibility of the application. Natural stone inherently comes with lots of questions and we provide those answers through our one on one time together. The Salotto is by special appointment only. After all, an extraordinary project requires undivided attention.





NOT ABLE TO BOOK AN  
APPOINTMENT AND NEED  
INSPIRATION RIGHT NOW?

## Join our Salotto Membership

With your membership you'll enjoy the benefits of the physical workroom online 24/7 including our resource directory of natural stone, texture details and of course inspiration photos.



© Antolini Luigi & C. S.p.A. All rights reserved.

#### NOTE LEGALI

Il presente catalogo e tutto quanto in esso contenuto (foto, immagini, testi, grafiche, etc.) è di esclusiva proprietà della società Antolini Luigi & C. S.p.A. ed è da intendersi protetto dal diritto d'autore.

È assolutamente vietato distribuire, modificare, pubblicare o comunque utilizzare in qualsiasi modo o forma il contenuto del presente catalogo senza l'autorizzazione scritta della società Antolini Luigi & C. S.p.A.

Salvo diversi accordi scritti, la consegna del presente catalogo non implica la concessione di alcuna licenza su di esso.

L'eventuale inosservanza delle presenti disposizioni, salvo esplicita autorizzazione scritta, darà titolo alla società Antolini Luigi & C. S.p.A. di agire nelle sedi competenti per la tutela dei propri diritti.

#### LEGAL NOTICES

This catalogue and its whole content, including pictures, images, textual contents, designs etc., are owned by the company Antolini Luigi & C. S.p.A. and are protected by Copyright.

The distribution, alteration, re-publication or whatsoever utilization of this catalogue without prior written authorization of the company Antolini Luigi & C. S.p.A. are categorically forbidden.

Unless otherwise agreed with the company Antolini Luigi & C. S.p.A. in written form, the delivery of this catalogue does not entail any right over it and/or over any single contents.

Failure to comply with the above-mentioned provisions will entitle the company Antolini Luigi & C. S.p.A. to proceed against the violation of its copyright.

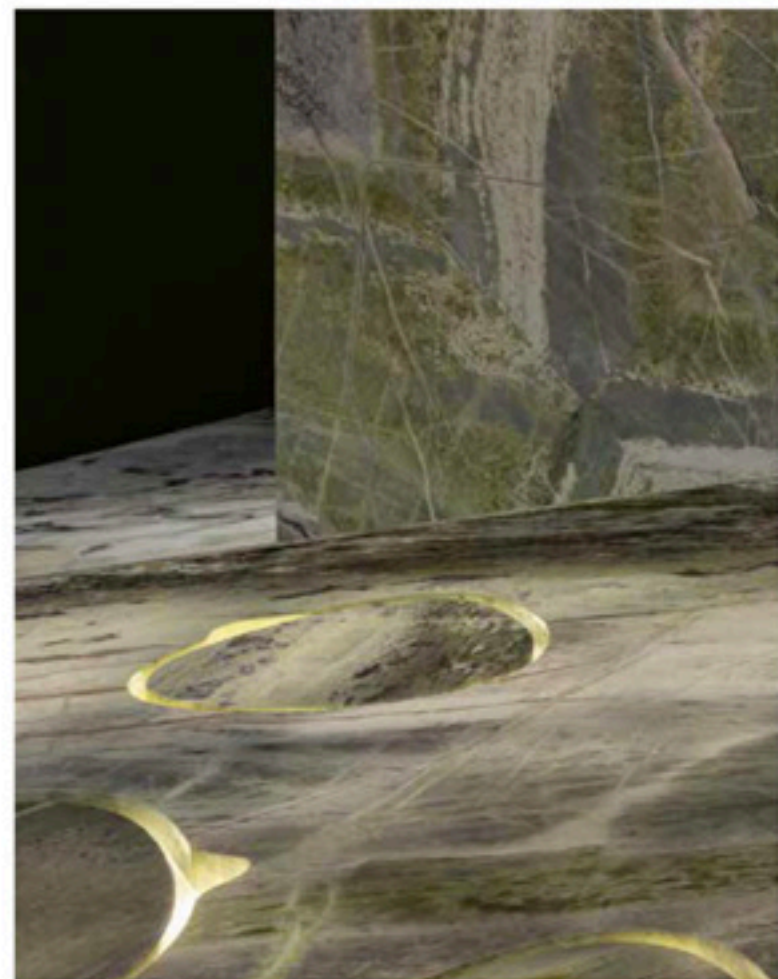


Antolini<sup>®</sup>  
ITALY

PIETRA  
Luxury in Stone

**PIETRA LLC**  
5980-C Peachtree Road,  
Atlanta, Georgia 30341 USA  
P (678) 773-5096

For more information, visit [www.antolini.com](http://www.antolini.com)



© Antolini Luigi & C. S.p.A. All rights reserved.

20